

# Watford



£1.00

**LITTLEWOODS  
CHALLENGE CUP**

**Third Round Replay**

**SWINDON TOWN**

Tuesday, November 3rd, 1987. K-O 7.45 pm

*solve it with* **solvite**

# CLIP BOARD



**Chairman:**  
Elton John

**Vice Chairman:**  
Geoff Smith

**Directors:**  
Jim Harrowell  
Bertie Mee, OBE, MCSP  
John Reid  
Muir Stratford, JP  
Mervyn Winwood

**Hon Vice Presidents:**  
Mayor of Watford  
Hans Boekkerink  
Douglas N. Broad  
T. Garel-Jones, MP

**Manager:**  
Dave Bassett

**Assistant Manager:**  
Alan Gillett

**Reserve Team Coach:**  
Geoff Taylor

**Youth Team Coach:**  
Tom Walley

**Physiotherapist:**  
Derek French

**Chief Scout:**  
Allen Batsford

**Chief Executive/Secretary:**  
Eddie Plumley, FAI

**Assistant Secretary:**  
John Alexander

**Marketing Manager:**  
Chris Childs

**Public Relations Manager:**  
Ed Coan

**Promotions Manager:**  
Mike Sullivan

## SEAT SPONSORS

For only £15 + VAT per year (£43.12 inc. VAT for three years) you or your company can have your name on an attractive red, yellow and black plaque on the seat of your choice in either the East or West Stands.

Application forms are now available from the Marketing Department or telephone Teresa Parker on Watford 225761.

Here is a selection of current seat sponsors:

### EAST STAND

Seat no.	Name
L41	David Waller
M119/120	Peter Cox & His Partners
M127	In Memory — Arthur and Gwen Grimsdell
N119	Peter John Barnard
O74	Graham Bail
O75	Shirley Bail
O105	Enjoy the game Michael from family
O115	Kim Hudspith
P35	Pete & Sylvia, The Jolly Bricklayers, Cheshunt
Q132	Jack Herbert
V52	In Memory of "Loud" John Spiers

### WEST STAND

R57	The Garrett Family, Chacombe
-----	------------------------------

### FAMILY ENCLOSURE

A96	In Loving Memory of Andrew
A104/105	Ladbroke Hotel, Watford
C147	In Memory of Harry Stanley

## VIDEO CLUB

WE have altered the "Video Club" system for the coming season. From now on, all videos of games will be sold from the Hornet Shop. We are no longer going to take in tapes, but instead we'll supply and sell the complete tape. Each video will cost £17.50 and as we go through the season we'll list in this space the videos that the Hornet Shop have in stock. All the videos come complete with a commentary, and VHS and Betamax tapes are available. The Hornet Shop will also accept 'phone credit card orders for videos, but if the video is to be posted a postage and packing charge of £1.00 will be added. Hornet Shop tel: Watford (0923) 220847.

## 78 goals in 90 minutes—and that's not counting the action replays!

The club highlights video tape of the 1986/87 season is now available from the Hornet Shop. It features every goal scored at Vicarage Road last season (including the opponents), with an action replay of all Watford's goals. Price: £17.50. Also now available: Watford v. Wimbledon (1-0, Aug. 15th), v. Tottenham (1-1, Aug. 29th), v. Portsmouth (0-0, Sept. 19th), Darlington (8-0, Oct. 6th, Littlewoods Cup).

## PRE-MATCH ENTERTAINMENT

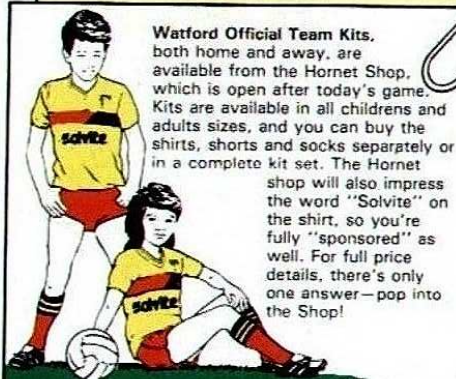
Today we present . . .

### REGENT BRASS BAND

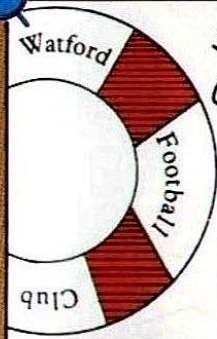
Coming soon . . .

**Saturday, November 14th**  
**Watford v Charlton Athletic**  
**FOOTBALL FRIENDS**  
**SECOND GRAND FINAL**

The Bears, Garston v. The Magnificent Seven, Berkhamsted



Watford Official Team Kits, both home and away, are available from the Hornet Shop, which is open after today's game. Kits are available in all childrens and adults sizes, and you can buy the shirts, shorts and socks separately or in a complete kit set. The Hornet shop will also impress the word "Solvite" on the shirt, so you're fully "sponsored" as well. For full price details, there's only one answer—pop into the Shop!



## SPARE OUR SEATS

An average of 25 seats get broken at every match because people use them as stepping stones in their impatience to leave the ground after a match. So please help the club and don't tread on the seats. They are intended for bottoms not feet!

## THE FAMILY ENCLOSURE & THE FAMILY TERRACE

are today sponsored by

### 13 CYCLES

Chalk Hill, Oxhey  
200 yards from Bushey Arches:—  
"Come and see the Dawes in our windows".

We also stock tandems, racing cycles, gloves, hats and shoes for cycling, lamps, safety belts, tyres and tubes. Try us first for all your cycling requirements.

*Support the shop that supports the team.*

**PANINI** *Stickers*

## HAPPY BIRTHDAY MUM

Send a birthday or greeting message on the Watford electronic scoreboard. £10.00 for an individual message.

*Application forms available from the Marketing Department or telephone Rebecca Freeman on Watford 225761 for details.*

## CANNON CINEMAS

**WATFORD 224088**

### BEVERLY HILLS COP II

(15)

Mon-Sat: 12.10, 2.50, 5.30, 8.00. Sun-Thurs: 2.50, 5.30, 8.00.

Up to 6 pm parents with their children under 15 pay child's price at U and PG films.

### WHO'S THAT GIRL (PG)

Fri-Sat: 1.10, 3.30, 5.50, 8.10. Sun-Thurs: 3.30, 5.50, 8.10.

ALL PROGS. SUBJECT TO LATE CHANGE

## GOLDEN GOALS!

WINNERS FROM

WATFORD v. WEST HAM UNITED (31/10/87)

1st goal	15 mins 45 secs	£100.00
2nd goal	69 mins 02 secs	£50.00
3rd goal	89 mins 49 secs	£10.00

### Lucky numbers

Autographed football—2046. Two seats for a Watford home match—0874 and 1362. Watford Pen—0044, 2218, 0635, 1749 and 1247. Bottle of Wine—0417, 2358 and 1960.

Today's

**Mitre**

Delta Matchball is sponsored by

**BOOTH, WHITE & CO**

Insolvency Accountants  
Telephone:  
Watford  
(0923) 36622



## TRAVEL AND TICKETS

Barclays League  
Division One

Queens Park Rangers v. Watford  
at Loftus Road

Saturday, November 7th, 1987. Kick-off 3.00 pm

Coaches depart at 1.00 pm. from Cardiff Road, returning at approximately 6.15 pm. Cost: Adults: £4.00; Juniors/senior citizens: £3.50.  
Match tickets: Seats: £6.00; Terrace: £4.00 (payable at the turnstiles).

Private car travel: Mileage: Watford to Queens Park Rangers: approximately 12 miles. M1 southbound to Staples Corner, turn right North Circular Road, westbound A406 to Hanger Lane gyratory system take second exit A40 Central London continue to third traffic lights (East Acton) and turn right towards Hammersmith (Old Oak Road) to next traffic lights turn left (Uxbridge Road) towards Shepherds Bush, Loftus Road on left hand side.



### FRONT COVER SHOT:

Tony Agana, scorer of Watford's goal at Swindon last week in action against Norwich City earlier this season.  
(Photo: Martin Wellmark)



## HELLO!

Here are the club numbers. If 'phoning from outside Watford, please use the code 0923 before each number.

Newsline—(24-hour ticket and information)—35133  
Ticket Office (Tickets, travel and match information)—220393  
Administration—30933  
Marketing Department (Executive Boxes, Advertising, Sponsorship, Top Draw, Bingo, Lottery, Golden Goals)—225761  
Junior Homers—53836  
Hornet Shop—220847  
Catering—221457



# Harry's Game



**T**HE Littlewoods Cup draw pitched us against Swindon. No First Division club likes going against underdogs, knowing they are on a hiding to nothing.

Particularly not Swindon, the snarling little club that feeds off Cup exploits and had already eaten Portsmouth home and away this season, and still felt satisfied feasting off Sheffield Wednesday a year ago.

And who can forget that this was the side who won this trophy—then called the League Cup—in the 1968-69 season when they beat Arsenal and all their big names 3-1 at Wembley.

I have been on their side of the fence and knew knees would knock. The situation called for calm, First Division experience and pride.

The fact I have been called upon to write extra notes means Watford's fans can be proud their side achieved all three objectives. Claiming a replay to me—was a marvellous performance when QPR, Charlton, Nottingham Forest, Norwich and Spurs fell to opposition that, given another night and competition, might not have worried them.

Tony Agana scored the goal that mattered and I was delighted for him. Tony has done well in the few short months he's been in League football and I know he has been encouraged by the support given to him from the terraces. It wasn't easy making the big step from non-League football.

A draw at Swindon was only half the job. Now we must find the same resolve tonight and show we deserve another compelling

Cup-tie—this time a trip to Manchester City in the next round.

Losing at home to West Ham on Saturday was disappointing going by the result itself, but I am not despondent as, on another day, this was a game we could easily have won. Chances were missed at vital times which could easily have altered the course of the game.

Our results in Division One have been disappointing, although I still say it's early days yet, but I'm delighted with the form of both the reserve and youth teams.

Tim Sherwood is one such youngster that has impressed and as such I had no hesitation giving the 18-year-old his debut at Everton. He fitted in quite nicely on the big stage. It could be that he might have to drop back into the reserves in the coming weeks to further his education but Tim can be delighted with his first team introduction.

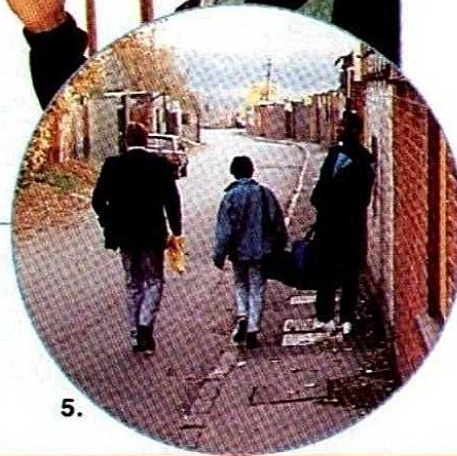
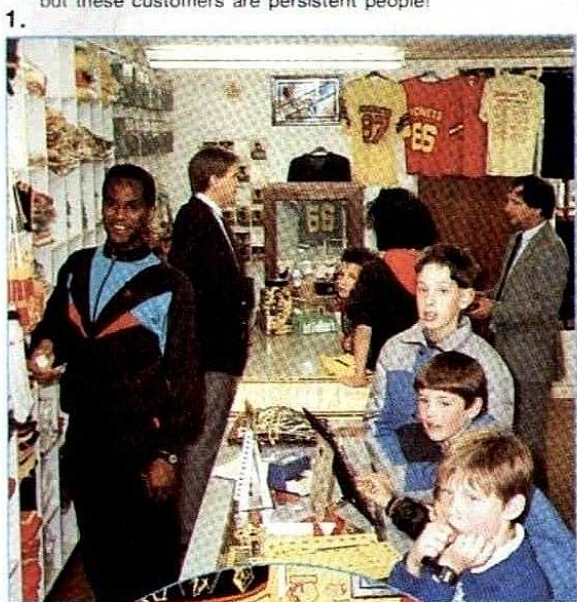
The message is clear to all here: there is no cartel. Prove yourself and doors will open. Take care. Enjoy the game.

*Dave Zanello*

## HALF-TERM IN THE HORNET SHOP

As a special school half-term promotion, various Watford players spent last week working in the Hornet Shop. **Steve Terry, Tim Sherwood, Gary Chivers, Worrell Sterling and Gary Porter** took part, and last Thursday the camera homed in on **John McClelland** and **Tony Agana** during their stint behind the counter. **1.** Service with a smile as Tony Agana goes looking for one of the vast range of items in the shop. **2.** A pause for John McClelland from the hustle and bustle of shop life to sign some autographs. **3.** Give these lads a break! In fact, a tea break. **4.** A goodbye wave signals that the working day is over . . . **5.** . . . and as the sun lowers over Vicarage Road, John and Tony wend their way home—but these customers are persistent people!

# In Colour LOOK BACK



But fear not Hornet Shoppers, the Watford players will be back behind the counter—probably during the school Christmas holidays. Don't forget, the Hornet Shop is open every Tuesday to Saturday inclusive from 9.00 am to 5.00 pm and after the game at all first team matchdays.





N.B. Watford scores are given first in scorelines on these pages and teams are reproduced in 1-12 order.



## LITTLEWOODS CUP THIRD ROUND

v. Swindon Town, Wednesday, October 28th, away  
Score: Drew 1-1; Half-time: 1-1

Scorers: Swindon: Quinn (23 mins, penalty); Watford: Agana (2 mins)

Attendance: 13,833

**Swindon:** Hammond, Hockaday, King, O'Regan, Parking, Calderwood, Bamber, White, Quinn, Foley, Barnard. Subs: Henry for Hockaday (88 mins), Gittens for O'Regan (83 mins).

**Watford:** Coton, Gibbs, Rostron, Morris, Terry, McClelland, Agana, Allen, Senior, Sherwood, Hodges. Subs: Porter for Agana (64 mins), Roberts for Sherwood (88 mins).

**Ref:** David Phillips (Barnsley)

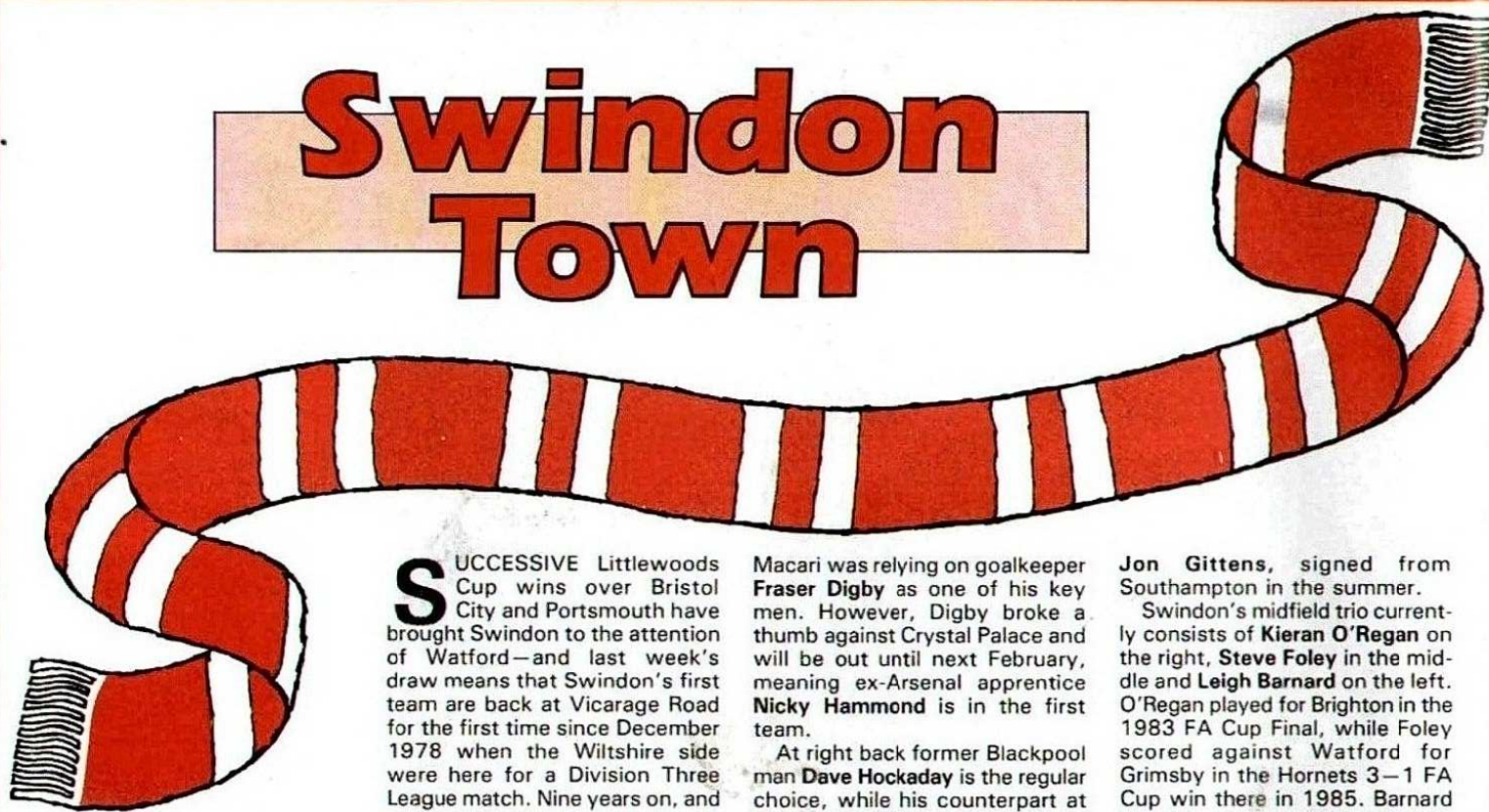
**Lou Macari said:** "I won't get involved in the penalty decision apart from saying I was pleasantly surprised when the referee pointed to the spot. But, on the other hand, there was a player off-side when Watford scored."

**Dave Bassett said:** "It was an exciting game that could have swung either way and I feel the fans went home having seen plenty of action and incident."

Second half at the County Ground and Nicky Hammond foils Tim Sherwood, making his Littlewoods Cup debut for Watford.

(Photo: Watford Observer)

# Swindon Town



**S**UCCESSIVE Littlewoods Cup wins over Bristol City and Portsmouth have brought Swindon to the attention of Watford—and last week's draw means that Swindon's first team are back at Vicarage Road for the first time since December 1978 when the Wiltshire side were here for a Division Three League match. Nine years on, and until recently Manager Lou

Macari was relying on goalkeeper **Fraser Digby** as one of his key men. However, Digby broke a thumb against Crystal Palace and will be out until next February, meaning ex-Arsenal apprentice **Nicky Hammond** is in the first team.

At right back former Blackpool man **Dave Hockaday** is the regular choice, while his counterpart at left back is **Phil King**, signed from Torquay United last March.

The central defensive duo is **Tim Parkin**, previously with Bristol Rovers, and Scottish-born club captain **Colin Calderwood**, who's been ever-present since joining from Mansfield Town. Able to slot into the centre of defence is

**Jon Gittens**, signed from Southampton in the summer.

Swindon's midfield trio currently consists of **Kieran O'Regan** on the right, **Steve Foley** in the middle and **Leigh Barnard** on the left. O'Regan played for Brighton in the 1983 FA Cup Final, while Foley scored against Watford for Grimsby in the Hornets 3-1 FA Cup win there in 1985. Barnard joined from Portsmouth in 1982. Also able to slot into midfield is Acton-born **Charlie Henry**, a substitute in last week's game, and another midfielder on the books is **Chris Kamara**, who is expected to play tonight after serving a three-match suspension. Another midfielder at Swindon is ex-Manchester United man **Peter Coyne**.

Up front, Northern Ireland striker **Jimmy Quinn** wears no. 9, and has already scored seven goals in this season's Littlewoods Cup. He's another in his second spell at Swindon, where he's currently joined by the formidable **Dave Bamber**, now with his fifth League club. Completing the forward line-up will be **Steve White**, signed from Bristol Rovers on a free transfer in July 1986.

## WHO'S WHO

Name	Position	Birthplace	Date of birth
FRASER DIGBY	Goalkeeper	Sheffield	23.4.67
NICKY HAMMOND	Goalkeeper	Essex	7.9.67
COLIN CALDERWOOD	Defender	Stranraer	20.1.65
JON GITTENS	Defender	Moseley	22.1.64
DAVID HOCKADAY	Defender	Billingham	9.11.57
PHILLIP KING	Defender	Bristol	28.12.67
TIM PARKIN	Defender	Penrith	31.12.57
ANDY ROWLAND	Defender	Derby	8.9.54
LEIGH BARNARD	Midfield	Worsley	29.10.58
PETER COYNE	Midfield	Manchester	13.11.58
CHARLIE HENRY	Midfield	Acton	13.2.62
STEVE FOLEY	Midfield	Liverpool	4.10.62
MARK JONES	Midfield	Berinsfield	26.9.61
CHRIS KAMARA	Midfield	Middlesbrough	25.12.57
JOHN KELLY	Midfield	Bebington	20.10.60
KIERAN O'REGAN	Midfield	Cork	9.11.63
DAVE BAMBER	Forward	St. Helens	1.2.59
BOBBY BARNES	Forward	Kingston	17.12.62
JIMMY QUINN	Forward	Belfast	18.11.59
BRIAN WADE	Forward	Bath	25.6.63
STEVE WHITE	Forward	Chipping Sodbury	2.1.59

## FORMGUIDE

The past 11 encounters between Watford and Swindon Town:

Season	Comp.	Home	Away
1969-70	Div. 2	0-0	0-1
1970-71	L. Cup	—	2-4
1970-71	Div. 2	1-2	1-1
1971-72	Div. 2	0-0	0-2
1974-75	Div. 3	1-0	2-2
1978-79	Div. 3	2-0	0-2

Summary: (not including Cup games)

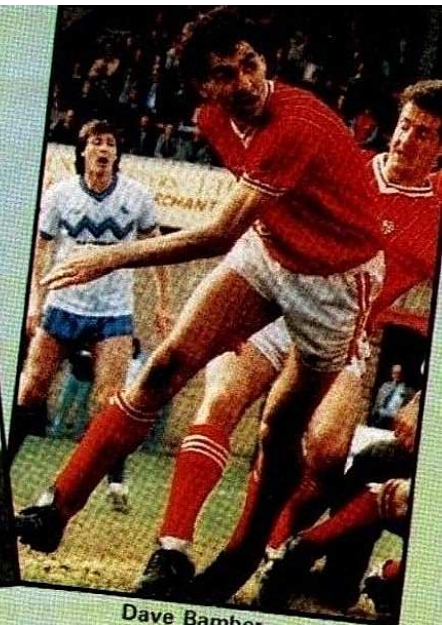
	P	W	D	L	F	A	Pts
Home	5	2	2	1	5	2	5
Away	5	0	3	2	3	8	3
Total	10	2	5	3	8	10	8

## TWO-WAY TUSSLE

A tall, rangy striker **Dave Bamber** looked a handful in the match last week—not just as a potential scorer of goals, but as a maker of them as well. He wore no. 7, as he will again tonight, but popped up in a more central rôle than his number would suggest. His career began with Blackpool and he later stepped into First Division football with Coventry City, who paid £50,000 for him. He subsequently joined Walsall for £20,000 and then it was on to Portsmouth before a loan spell at Swindon tempted Lou Macari to part with £12,500 for his signature. His forward forays tonight will bring him up against Watford's captain **John McClelland**, who like Dave has picked up valuable experience at various football levels—ranging from the non-League game with Welsh side Bangor City right through to representing his country (Northern Ireland) and the Football League, for whom he marked Diego Maradona in the Centenary Classic.



John McClelland



Dave Bamber

(Photo: Martin Dalton)

Back row, from left: Tim Parkin, Jimmy Quinn, Fraser Digby, Chris Kamara, Nicky Hammond, Charlie Henry, Colin Calderwood.  
Middle row, from left: Andy Rowland (Coach), Dave Hockaday, Phil King, Terry Merriman, Dave Bamber, Jon Gittens, John Kelly, Steve White, Steve Foley, Chris Ramsey (now with Sunderland), Kevin Morris (Physiotherapist).  
Front row, from left: Alan McLoughlin, Bryan Wade, Peter Coyne, Lou Macari (Manager), John Trollope (Assistant Manager), Steve Berry, Leigh Barnard, Mark Jones.



# Whispers from the **VICARAGE**

## If, if, if . . .

If the scores are still level at the end of 90 minutes tonight, an extra time period of 30 minutes will be played.

If it's still level at the end of that period, the winners will be the side who have scored the most away goals. So if it's 0-0 at the end of extra time, Watford will win, but if it's 2-2, Swindon will win.

If however it's 1-1 and therefore both sides have scored the same amount of away goals, the tie goes to a penalty shoot-out—five penalties each and then sudden death if the sides are still level.

## Tickets for the disabled

WATFORD has a very popular area set aside for disabled persons at the southern end of the stadium, but if you've ever wondered how to buy tickets and the price etc., here's the answer:

There is room for 50 people in the Disabled Enclosure and tickets are £3.00 for disabled persons and £3.50 for their helpers. A maximum of one helper per disabled person is allowed. When the Enclosure is full, there is an "overspill" area of 18 seats on the front row of Block "K" in the Rous Stand Enclosure. Tickets for disabled persons and their helpers are the same price for that area.

You can buy a season ticket for the Disabled Enclosure, which are sold at the same price as for terrace season tickets, with the appropriate discounts for children and senior citizens. You can still buy a season ticket for the remainder of the season in the Disabled Enclosure, which will be charged at a pro rata price.

If you are a registered disabled person, the Ticket Office would naturally like to see your registration card or other documentation when you buy a ticket, but clearly, if you don't have a card, discretion will be applied.

## QUIZZKIDS!



(Photo: Watford Observer)

WINNERS of the first-ever Quiz Night staged by the Watford FC Development Fund were Bassett's Allsorts—a team made up mostly Watford FC staff members.

They are seen above with spoils of victory—the Watford Observer Shield, which was presented by players Nigel Gibbs, Kenny Jackett and Luther Blissett, who are also in the photograph. The Allsorts are, from left: Rebecca Freeman (Marketing Department), Karen Moorhouse, Nick Moorhouse (Catering Manager), Robert Smith (former Supporter of the Year), Lynn Fleckney and Lauren Fox (Marketing Department), John Alexander (Assistant Secretary), Tony Marks (former Hornet Shop Manager).

Along with the other contestants, the Allsorts answered questions on music, sport, general knowledge and of course, on Watford Football Club. Posing the questions was Chiltern Radio and LBC's Mike Vince, who compiled the questions as well. The evening raised approximately £700, which all goes into the general funds for stadium improvement—and it's planned to hold the Quiz Night as an annual event.

## A win tonight and it's Manchester City away

IF Watford win tonight, a fourth round Littlewoods Cup tie at Manchester City awaits on **Tuesday, November 17th.**

Should that match become a reality it will mean Watford have played at Maine Road in all three Cup competitions in successive seasons. Two

seasons ago it was the FA Cup, last season the Full Members' Cup (now the Simod Cup) and now possibly the Littlewoods Cup.

Tickets and travel details for this provisional match are on page 3 of this programme.

## This season's 'Soccer Saver'

THERE has been some confusion over the use of the 'Soccer Saver' pass which is included free in every Watford season ticket book and given free to every Supporters Club member.

The 'Soccer Saver' pass entitles the holder to travel at half the normal single or return fare (adult or child, as applicable) to and from Watford Town Centre on first team home matchdays.

In previous seasons, the agreement was between the Football Club and the London Country and Watford-wide bus serves. These services have now been divided into separate companies, with London Country North West being the company serving the Watford area. However, the area to the east of Watford, from St. Albans out to Hertford and beyond, is served by London Country North East—who to date have not been involved in the 'Soccer Saver'

scheme since becoming independent.

Until recently, bus service 321, which comes to Watford, was operated by London Country North East, but since September 5th was transferred to London Country North West and so falls under the 'Soccer Saver' banner.

The only two services to Watford run by the North East Company are 524 and 727, which are to be combined on October 31st into a new service 'Airlink 724'.

London Country North East have agreed to include the 724 route in the 'Soccer Saver' scheme for this season, and they will review the situation at the end of the season, to see whether it's viable.

Don't forget that you must of course present your 'Soccer Saver' pass when claiming your reduced fare. The Soccer Saver pass is included in every season ticket book, and is also included in the membership pack for Supporters Club members.

## Caught up?

If you haven't caught up with the reserves and/or youth team this season, you can see both sides play within the space of three days at Vicarage Road next weekend.

First the reserves take on West Ham on **Saturday, November 7th**, kick-off 3.00 pm, and then on **Monday, November 9th**, the youth team face Norwich City in a Southern Junior Floodlit Cup second round tie, kick-off 7.30 pm.

Admission for both these matches is £1.00 adults and 50p for children/senior citizens, but entry to the reserve game is free to season ticket holders.

Supporters Club members and Junior Hornets members, on production of their season ticket book or membership card at the turnstile. This concession does not apply to the youth team game, but see the Junior Hornets page (page 30) for a special concession for the youth team game.

## John—a real driving force

THERE'S no doubting that **John McClelland** is a driving force on the pitch, but until October 21st he couldn't make that claim off the field.

But he can now, because that's the day John passed his driving test!

## Tonight's other matches

**Littlewoods Cup—third round replay:**

Oldham Athletic v. Leeds United

**Barclays League, Division One:**

Arsenal v. Chelsea

**Tomorrow's Littlewoods Cup replays:**

Leicester City v. Oxford United; Reading v. Peterborough

## Fireworks Night—tomorrow and the next night too

IT'S a busy week at Watford this week. Hopefully the night sky will be lit up tonight with a Watford win, but we can guarantee that will happen for the next two nights at Vicarage Road.

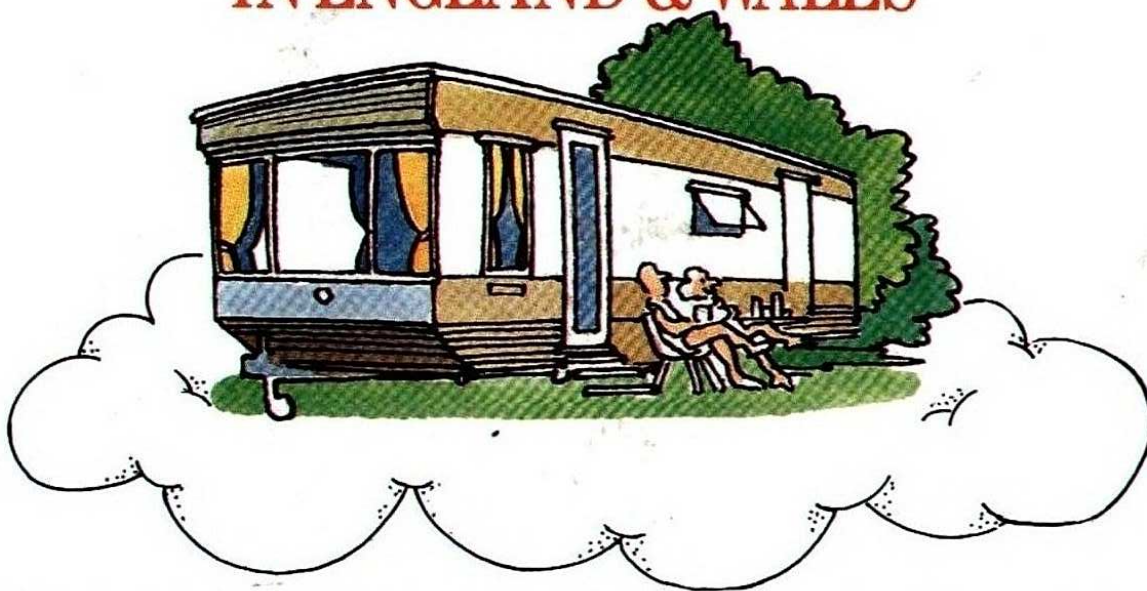
That's because the annual Fireworks Night, which has become an extremely popular local event, is being held over the next two nights—

and adding to the night sky illuminations will be a Special Effects Laser Show, which will precede the fireworks display.

The show on both nights starts at 7.45 pm and tickets are still on sale—but be quick, as demand is very brisk. Full price details are on page 25 of this programme.

# Haven

LUXURY CARAVAN & CHALET HOLIDAYS  
IN ENGLAND & WALES



**HOLIDAYS ARE MADE IN HAVEN!**

**32 parks in great seaside locations**

**For your free Haven Holidays brochure telephone: 0442 230300  
or see your Travel Agent**

**Haven Holidays, Waterhouse Street, Hemel Hempstead HP1 1DS**



*A Company within the Rank Organisation*

## SUNDAY MIRROR COMBINATION

v. Brighton & Hove Albion,  
Monday, October 26th,  
away

Score: Lost 1-2; Half-time  
0-1

Scorers: Brighton Horscroft,  
Gipp; Watford: Hetherston  
Attendance: 178

*Brighton:* Digweed, Webber, Chapman,  
Rowell, Horscroft, Isaac, Dineen, Trusson,  
Tiltman, Gipp, Armstrong. Sub: Harris for  
Isaac (74 mins).

*Watford:* Rees, Chivers, Rumble, Powell,  
D. G. Holdsworth, Pullan, Hetherston,  
Sterling, D. C. Holdsworth, Blissett, Doherty.  
Sub: Richardson (not used).

v. Reading, Saturday, Oc-  
tober 31st, away

Score: 7-1; Half-time: 5-0

Scorers: Reading: Joseph;  
Watford: Blissett (3), D. C.  
Holdsworth (2), Hetherston,  
Doherty

Attendance: 75

Reserve team coach Geoff  
Taylor reports: We took the lead  
in the second minute of the  
match when Luther Blissett  
scored from a Paul Rumble  
corner.

We followed this up with a  
further three goals from corners,  
including one more from Luther  
Blissett, Dean Holdsworth and  
Peter Hetherston with Luther  
adding another to make it 5-0  
at half-time.

In the second half Reading  
tightened up but we added two  
more goals through Dean  
Holdsworth and Neil Doherty.  
Their goal coming near the end,  
would you believe it! From a  
corner.

A good performance from the  
team after our 2-1 defeat at  
Brighton the previous Monday.

*Reading:* Hook, Baillie, Blackwell, Franklin,  
Kearney, D'Arcy, Bashir, Joseph, Davis,  
Head, Canoville. Sub: Aust.

*Watford:* Rees, Powell, Rumble, D. G.  
Holdsworth, Terry, Pullan, Hetherston,  
Sterling, D. C. Holdsworth, Blissett, Doherty.  
Sub: Smith for Sterling.

# STRENGTH IN DEPTH

## S.E. COUNTIES LEAGUE CUP FIRST ROUND

v. Tottenham, Saturday, Oc-  
tober 31st, away

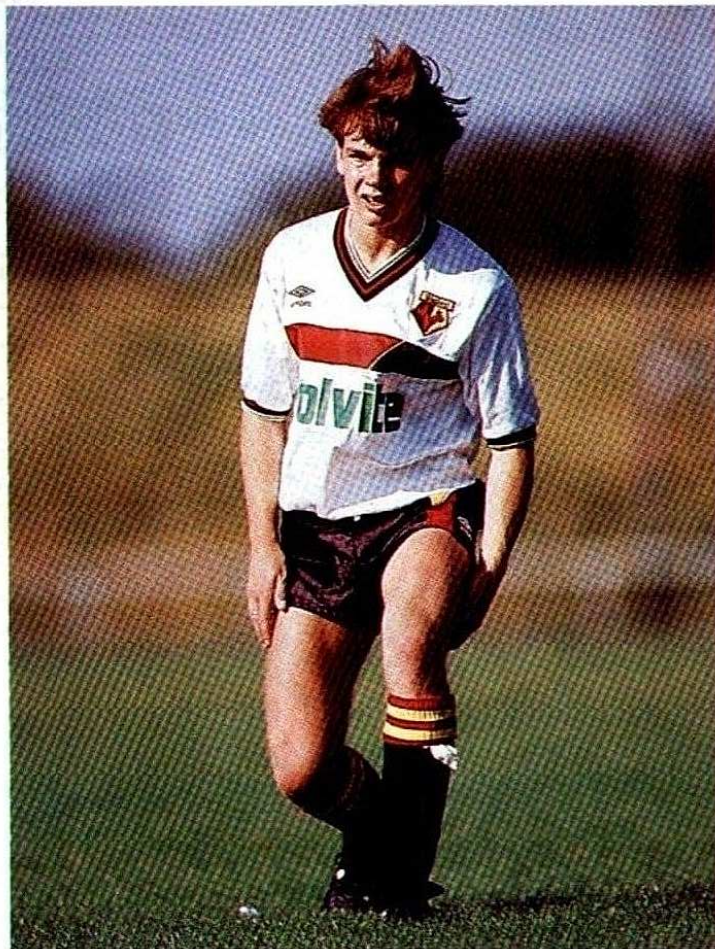
Score: Lost 1-2; Half-time  
0-1

Scorers: Tottenham: Fit-  
zgerald, Butters; Watford:  
Thomas

Attendance: 90 (est)

*Tottenham:* Dearden, Roberts, Smart,  
Polston, Butters, Cook, Murray, Garland,  
Johnston, Fitzgerald, Gilzean. Subs:  
Carney for Murray (half-time), Theodosiou  
(not used)

*Watford:* James, Towler, Naylor, Potter,  
Soloman, Ashby, Richardson, Emslie,  
Thomas, Gunn, Wignall. Subs: Bennett for  
Emslie (61 mins), Price (not used).



Kevin Richardson—a Watford professional, but he's still young enough  
to play for the youth team.

(Photo: Alan Cogzi)

## S.E. Counties League round-up

WITH most clubs being in-  
volved in the second round  
of the League Cup last  
Saturday, Watford retained  
their three points lead over  
Tottenham Hotspur at the  
top of the table with 23  
points from 14 matches.

Gillingham remain the on-  
ly side undefeated at home,  
although of their 13 games  
to date, only four have been  
played on home soil. Fulham  
and Norwich City are both  
yet to win at home, while  
Fulham and Cambridge  
United, the League's two  
bottom clubs are the only  
two yet to win an away  
match. Fulham's only points  
have come in home draws  
with Millwall and West Ham  
while Cambridge have won  
one game and lost 12 of  
their 13 games, their win  
coming against Fulham  
4-3.

## Watford Football Club

- ★ Win tickets to see "Phantom Of The Opera"
- ★ Win a luxury day out at Royal Ascot
- ★ Win a weekend for two in Paris

How would you like to win, not one, not two, but all of these fabulous prizes and earn a regular basic wage plus bonuses? Well, you can! How? By joining our

## TOP DRAW TELEPHONE SALES TEAM

Watford Football Club are looking for four people who have a bright and friendly telephone manner. They will be required to phone members of the Watford Supporters' Club to promote the benefits of being a member of its popular fund-raising scheme "TOP DRAW".

*Applicants should*

Be able to communicate with the public. Be able to work to set targets.

Be administratively well organised. Be available to work on Monday, Tuesday and Wednesday evenings 6.30 pm to 8.30 pm.

Previous similar experience would be an advantage but is not essential.

Please write giving full information about yourself and your working career to:

**MIKE SULLIVAN, PROMOTIONS MANAGER  
WATFORD FOOTBALL CLUB  
VICARAGE ROAD, WATFORD, HERTS WD1 8ER**

**Season Ticket Holders and Supporters  
Club members can**

## BUS TO THE MATCH AT HALF-FARE

WITH A

**Watford**



**LONDON COUNTRY North West  
GREEN LINE** ➔



**WATFORD**  
SPORTS AND LEISUREWEAR

## JOIN THE TEAM

Unique – the team's very own look for sports and leisure. With the distinctive style, quality and prestige of the match kit, training and off-the-field wear worn by the players themselves.

Made by Umbro, the club's official supplier. There are designs and sizes to suit most members of the family.

There's no mistaking the real thing – every garment bears the authentic team badge and the distinctive Umbro diamond trade mark.

Join the team – with Umbro.

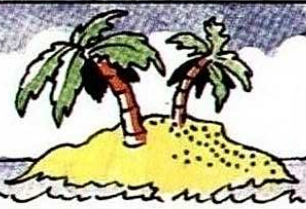


**umbro**

**IT'S ONLY AUTHENTIC  
IF IT'S UMBRO**

# BRAIN TEASERS

1 IT'S NO JOKE, NAME THE CLUB WITH PALM TREES ON ITS EMBLEM



## 10 SPOT

WE'RE A BIT WORRIED ABOUT YOUR CONCENTRATION BRIAN



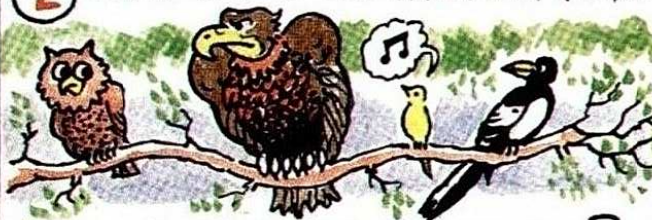
TEN DIFFERENCES BETWEEN TOP AND BOTTOM CARTOONS, IT NEEDS MORE CONCENTRATION THAN BRIAN'S

WE'RE A BIT WORRIED ABOUT YOUR CONCENTRATION, BRIAN



CHECK YOUR ANSWERS ON PAGE 35

2 ODD BIRD IN THE AVIARY...



.....WHICH ONE IS IT?

3 ANAGRAM — THIS YOUNG HORNET GAVE.....



...HIS WORD TO ME

SORT HIM OUT!

4 THREE WATFORD LADS ARE SUGGESTED HERE.



.....THINK ABOUT IT.

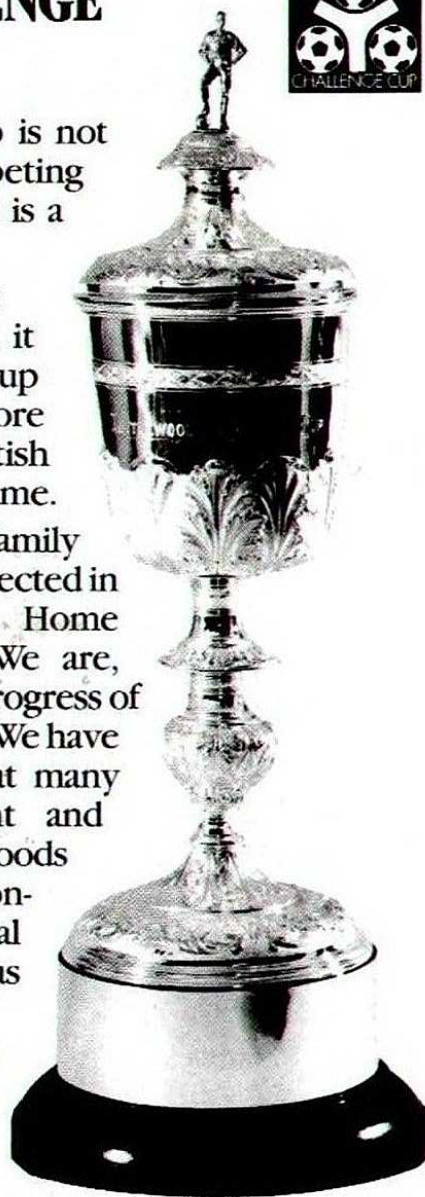
## FACING THE CHALLENGE

The Littlewoods Challenge Cup is not just a challenge to the teams competing for this magnificent trophy, but is a challenge to us all.

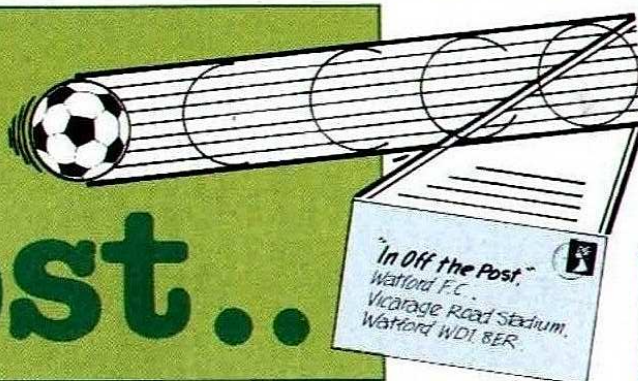
It is the same challenge that Littlewoods put to itself when it took on the sponsorship of the cup in 1985. That challenge is to restore football to its rightful place in British Society as the traditional family game.

Littlewoods has always kept the family at heart, with its values being reflected in all our three main divisions; Home Shopping, Stores and Pools. We are, therefore, delighted with the progress of the Littlewoods Challenge Cup. We have seen high family attendances at many matches, and the excitement and interest generated by the Littlewoods Junior Challenge Cup, in conjunction with the National Association of Boys Clubs, has been tremendous.

So join Littlewoods in this challenge and help restore the traditions to Football – our National game.



# In Off The Post..



## Ties to the Slaughter

WHILE looking at a national newspaper recently and flicking through the sports pages, I came across a picture of the English cricket touring team and, to my surprise, they were wearing Watford Football Club ties.

Can you tell me why?

**Mr. Slaughter,**  
Berry Avenue, Watford.

●Well spotted Mr. Slaughter. However, the ties you mentioned are actually the official England touring tie, but do bear a very strong resemblance to Watford's red, black and yellow striped tie.

## Fond farewell to Tony

GOING into the Hornet Shop, I was sorry to hear that Tony, the Shop Manager, has now left to take up a new position.

While wishing him good luck, I know he will be sadly missed. Nothing has ever been too much trouble and he has always been helpful, polite and, when asked to order a special item, you can always rely on him to do so straight away and then call you to tell you when it is ready.

Let us hope that Dave Dunham will carry on the good work and customer service and keep the Hornet Shop the helpful place that it has become.

Once again, wishing Tony all the best.

**B. Wilton,**  
Garston Drive,  
Garston, Watford.

●Yes, Tony Marks, Hornet Shop Manager for the past seven years left Watford on October 17th for pastures new—and we wish him all the best. He's gone to work for a sporting souvenir manufacturer.

## Derek the interested

I am very interested in your "Top Draw" scheme and also would like to know more about your programme subscription.

I have heard about these things but don't know how to go about applying as I live so far away.

I've supported my local club for years but following their Fourth Division championship win a few years ago, Watford played my team, Airdrie, at Bloomfield in a pre-season friendly. I've followed the Hornets results ever since although I've only watched them play twice.

Since then a friend of mine who lives in North London sends me the fixture lists and promotional booklet, which is how I joined the Supporters Club and how I came to hear of the other two schemes.

I hope you can help me.

**Derek Peat,**  
"Westgate",  
Motherwell Street,  
Airdrie, Scotland  
●We have duly sent Derek all the information he needs. Details of both programme subscription and Top Draw can both be obtained from the Marketing Department (Tel: Watford 225761).

## A Kiwi call

I want to buy various items of Watford merchandise such as jumpers, scarves, key rings, tee shirts etc. However, as I live abroad, I don't know how to go about getting these items.

Please can you help me.

**Robert Paterson,**  
The Vicarage, Sheffield,  
Canterbury, New Zealand.  
●You can order all of these items from Watford's Hornet Shop by either filling out the mail order form on the price list and sending it through the post with a cheque, postal order or by credit card or you can call the shop, Tuesday to

Saturday, on Watford (0923) 220847 and place an order with your credit card details—yes, even from New Zealand!

## To all those who travelled to Everton...

THROUGH one of our officials who travelled to Everton, the Merseyside Police have asked us to compliment our club stewards on their organisation of the away supporters. Furthermore, they noted that it was always a pleasure to have Watford supporters at Goodison Park as they were always courteous and well-behaved.

So, a pat on the back to all those who made the trip.

## Pen Pal for Paul?

THIS Tottenham supporter would like to correspond with a female Watford supporter. Paul's other interests are sport, cinema, music and eating out and he will answer all letters received.

**Paul Casey,**  
23 Hempstead Road,  
Walthamstow,  
London E17 3RL.

# MAN IN THE MIDDLE



CLIFF  
POWELL

**D**EFENDER Cliff is now in his second year as a Watford professional, but has yet to play a first team game. How does he view his future at the club?

"It's difficult to assess at the moment, because I don't know yet what the new management team's opinion of me is. But I'm obviously hoping for a first team call, but if not I won't complain, I'll just get on and play.

"Also my rôle in the reserves has changed. Last season I played as a right back, but this season I've played as a centre-half. At the moment I think I prefer playing at right back because it gives me a chance to get forward more often, which I enjoy. But I don't really mind where I play, as long as it's in defence."

"Born and bred in Watford, it may be that the club or Cliff decides he should move on to further his career. Would that be a wrench? "Definitely, I've grown up in Watford and they've always been 'my' team. But if I felt I had to

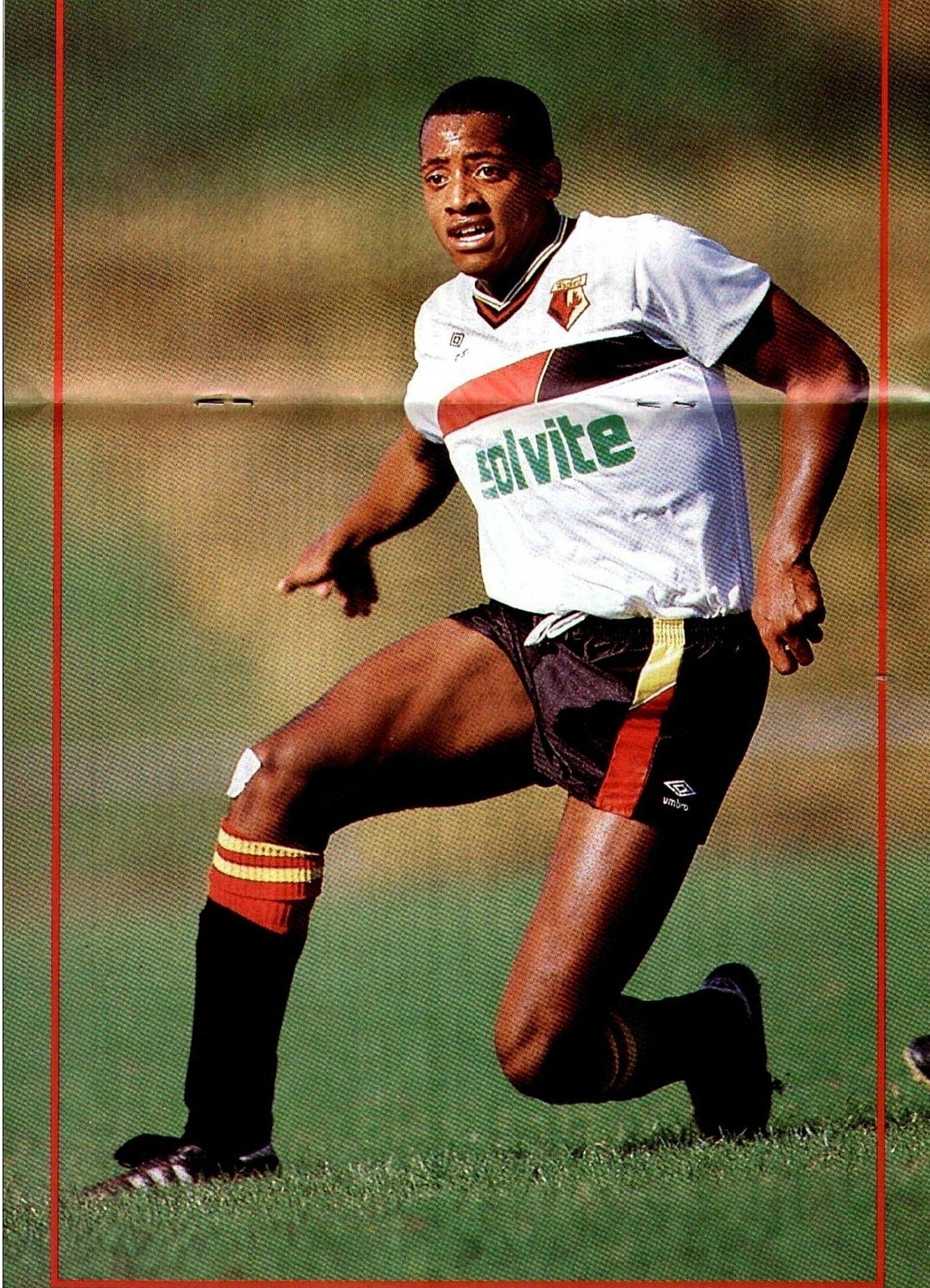
move on, I would.

At present Cliff is one of the key figures in this season's successful reserve team—why does he feel the reserves have done so well this season at a time when the first team are looking to string a winning run together? "There are not as many new faces in the reserves and those that have joined have fitted in well. The team is playing in the same style as last season, and there's no denying that winning is habit-forming and you can't help gaining confidence when you're winning."

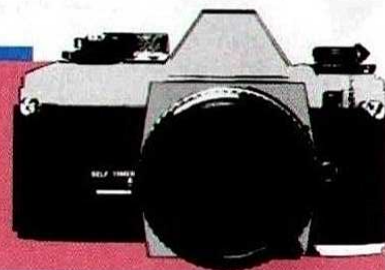
On the training field Cliff is working on improving his pace. "I've been doing some extra training specifically to improve my speed. On the positive side, I feel that for my size, my aerial ability is very good."

Cliff was spotted playing for local side Gadeside Rangers, who have competed in the half-time Watford Observer Shoot-Out. One wonders if we're looking at a future Watford star when we watch the Shoot-Out this season?





# IN FOCUS



**THE club's reserve side are currently riding high at the top of the Football Combination, now known as the Sunday Mirror Combination. And this season will see the reserves compete in their 250th Combination match since rejoining the League at the beginning of the 1981-82 season. Today we look back at those last six years of reserve team football, during which time the club's "second stringers" have performed with continued success.**

Watford's reserve side had been members of the Combination for many years, prior to joining the more local Midweek League at the start of the 1966-67 season—a tournament they were to compete in for 15 seasons. However, the Midweek League did not give the reserves the opportunity to match themselves against reserve sides of a higher standard, such as those of Tottenham Hotspur, Arsenal and West Ham United.

So, 1981-82, the reserves re-entered the Football Combination, lining up for their opening fixture, at home to Swindon Town. **Ian Richardson** (2) and **John Barnes** scored in a 3—3 draw. The season finished with Watford in fourth place, and since then have finished in fourth, second, fourth, fifth and fourth spots in successive seasons. No other reserve side has

managed to finish within the top five places during the past six seasons.

Overall however, the following table shows that over the past six seasons, QPR have the slightly better record although for those teams playing for the full six years, no side has lost fewer games than the Hornets.

## Goals

1	68	Ian Richardson I.
2	60	Jimmy Gilligan
3	49	Malcolm Allen
4	25	Gary Porter
5	22	David Johnson
6	21	Iwan Roberts
7	18	Neil Doherty
8	15	Worrel Sterling
9	13	Luther Blissett
10	13	Richard Sendall



**Ian Richardson—tops the reserves goalscoring chart for the last six season. He's now with Scunthorpe United.**

(Photo: Paul Fisher)

## Appearances

135	Paul Franklin
124	Ian Richardson
105	Neil Price
102	Worrell Sterling
96	Cliff Powell
95	Gary Porter
91	Charlie Palmer
91	Alan Paris
90	Steve Sherwood
88	Jimmy Gilligan

## League table including Combination results from 1981-82 to 1986-87 inclusive

	P	W	D	L	F	A	Pts
1 Queens Park Rangers	244	144	47	53	554	313	335
2 <b>WATFORD</b>	<b>244</b>	<b>138</b>	<b>55</b>	<b>51</b>	<b>507</b>	<b>297</b>	<b>331</b>
3 Arsenal	243	132	58	53	526	256	322
4 Tottenham Hotspur	244	132	52	60	556	332	316
5 West Ham United	244	132	50	62	572	335	314
6 Chelsea	244	135	39	70	497	268	309
7 Ipswich Town	244	127	45	72	442	307	299
8 Norwich City	244	114	65	65	453	326	293
9 Southampton	244	109	54	81	461	397	272
10 Luton Town	244	108	55	81	454	338	271
11 Fulham	244	84	50	110	346	402	218
12 Oxford United	244	80	49	115	393	458	209
13 Millwall	206	72	43	91	308	366	187
14 Swindon Town	243	69	42	132	363	563	180
15 Charlton Athletic	206	67	44	95	295	402	178
16 Birmingham City	206	68	37	101	271	371	173
17 Crystal Palace	244	60	52	132	309	528	172
18 Brighton	206	59	47	100	282	387	165
19 Bristol Rovers	244	59	42	143	326	594	160
20 Reading	244	46	36	162	263	685	128
21 Swansea City	168	48	25	95	208	379	121
22 Leicester City	122	39	31	52	208	211	109
23 Portsmouth	122	33	26	63	140	212	90
24 Plymouth Argyle	38	10	9	19	41	64	29

NOTES: 1. Charlton did not compete in season 1981-82; 2. Portsmouth did not compete in seasons 1981-82, 1982-83 and 1983-84 and had two points deducted in season 1985-86 for playing an ineligible player; 3. Millwall did not compete in season 1981-82; 4. Brighton did not compete in season 1981-82; 5. Swansea did not compete in seasons 1981-82 and 1986-87; 6. Birmingham did not compete in season 1986-87; 7. Leicester did not compete in season 1984-85, 1985-86 and 1986-87; 8. Plymouth Argyle only competed in season 1981-82; 9. Arsenal v. Swindon Town in season 1985-86 was not played due to fixture congestion.

The championships have been won by QPR in 1981-82, and then QPR, Arsenal, Chelsea, West Ham and Tottenham Hotspur respectively. In the 1983-84 competition, the Hornets were only four points short of catching Arsenal, as the reserves gained their highest placing, as runners-up. Watford have had most success against Reading, with 10 wins, one drawn and one defeat. The six home matches with Reading have seen 26 goals for and three against—including three consecutive home wins of 7-1, 6-1 and 8-0 in season 1983-84, 1984-85 and 1985-86.

**Paul Franklin** has represented the Hornets on more occasions than anyone else, with **Ian Richardson** topping the goalscoring list:

Richardson averaged a goal every 1.82 games, Malcolm Allen one every 1.77, and Jimmy Gilligan an impressive goal every 1.46 games.

Attendances at Vicarage Road for Combination matches in the last three seasons have averaged 802, 711 and 677 respectively. And in the 1984-85 season the crowd reached four figures on three occasions at Vicarage Road v. West Ham (1,059), v. Chelsea (1,302) and v.

Tottenham Hotspur (2,210). These figures have been created partly by the "Schools In Reserve" scheme run by the club, where free tickets are given to local schools and youth clubs etc.



**Neil Price**—made 105 reserve appearances for the club. He now plays for Wycombe Wanderers—and played for Watford in the 1984 FA Cup Final. (Photo: Alan Croxall)

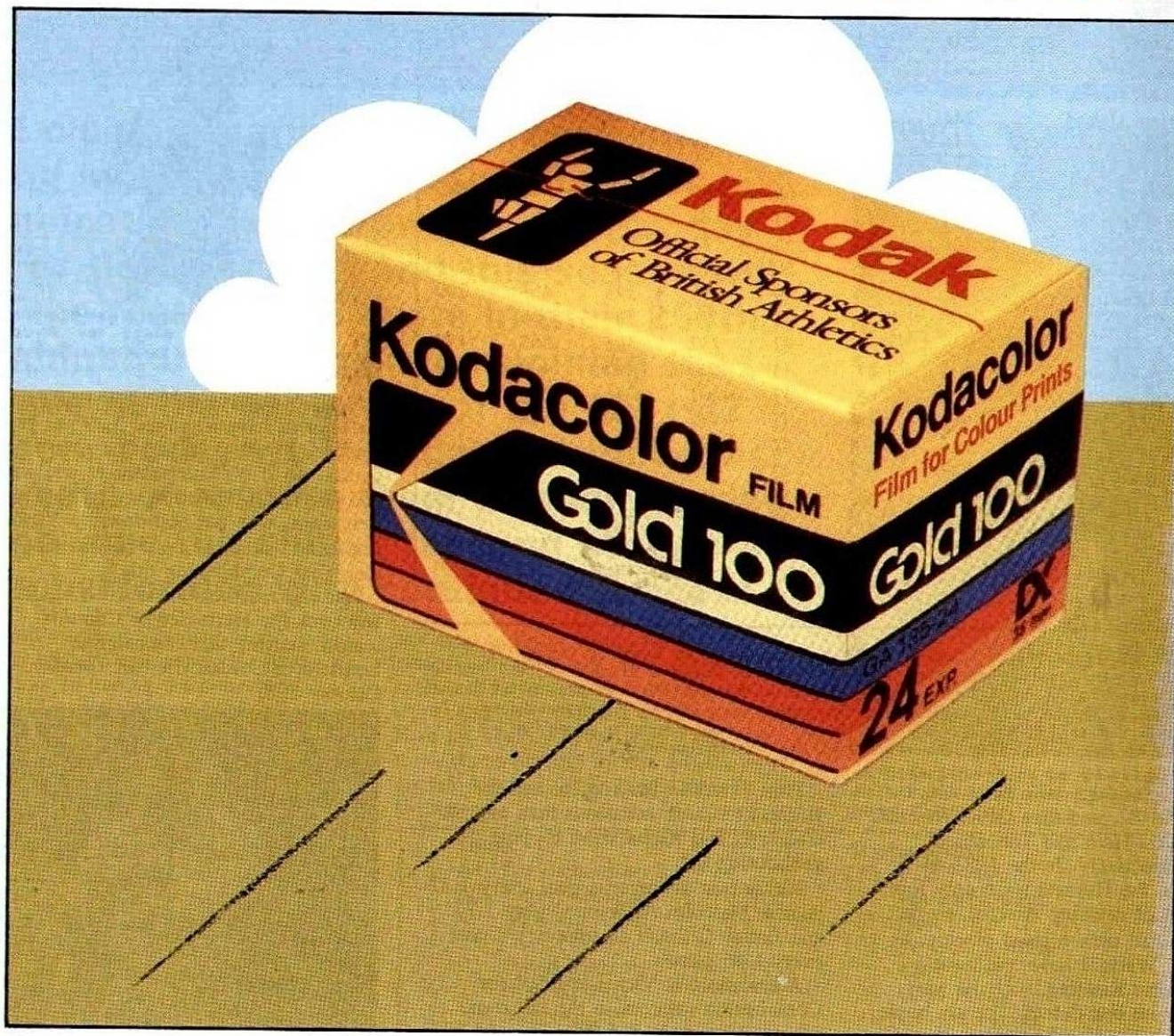
Goals in reserve matches over the past six seasons have averaged 3.29 per game, comparing with 3.16 for first team League games—so if it's entertainment you want, and you're not travelling away with the first team, why not pop down to Vicarage Road and watch the reserves challenge for their first Combination title.

And the reserves will also be bidding to win back the Herts Senior Cup this season, starting that campaign at Letchworth Garden City on Tuesday, October 20th.



**Alan Paris**—stalwart reserve player, he never played for the first team, and is now at Peterborough. (Photo: Paul Fisher)

# Shoot with Gold



HEMEL HEMPSTEAD: Head Office—P.O. Box 66, Hemel Hempstead, Herts. HP1 1JU. Telephone: (0442) 61122.  
HARROW: Manufacturing Division—Headstone Drive, Harrow, Middx. HA1 4TY. Telephone: 01-427 4380.

# PROFILE

Watford  
Professionals  
1987-88

## GOALKEEPERS:

**TONY COTON:** Born Tamworth, May 19th, 1961. Watford's first choice 'keeper. Broke a thumb towards the end of last season and missed the last 11 games, but still won the "Player of the Season" award.

**MEL REES:** Born Cardiff, January 25th, 1967. Signed for £60,000 in the summer as cover for Tony Coton. Only 20, Mel is a former Welsh youth international.

## DEFENDERS:

**GARY CHIVERS:** Born Stockwell, May 15th, 1960. Recently signed on a free transfer from QPR, Gary was drafted straight into the first team. Started his career as an apprentice at Chelsea, going on to make 143 senior outings (plus five as sub.) for the Blues. Subsequently joined Swansea City, and then QPR. Can play anywhere in the back four, or the right side of midfield.

**NIGEL GIBBS:** Born St. Albans, November 20th, 1965. Another former England youth cap, right back Nigel is now an under-21 international as well. Made his Watford debut in 1983 in the UEFA Cup-tie at home to Sparta Prague. Scored in both legs of the Littlewoods Cup second round tie against Darlington.

**DAVID HOLDSWORTH:** Born Walthamstow, November 8th, 1968. Central defender who is the older by 40 minutes of his twin Dean, also a Watford professional. David has captained the England youth side.

**JOHN MCCLELLAND:** Born Belfast, December 7th, 1955. Club captain and also current captain of his country, Northern Ireland. Played in the side representing the Football League in the "Centenary Classic". Central defender.

**MARK MORRIS:** Born Morden, September 26th, 1962. Centre half who was signed from Wimbledon,

new Manager Dave Bassett's former club, in the summer. Mark can also play in midfield. Made his Watford debut in the opening game of the season, against his former club.

**CLIFF POWELL:** Born Watford, February 21st, 1968. Another central defender. Cliff was spotted playing for local side Gadeside Rangers. Stalwart in the reserve team last season. Featured in the centre pages of this programme.

**WILF ROSTON:** Born Sunderland, September 29th, 1956. Attacking left back who was originally signed in 1979 from Sunderland as a left winger. Now in his ninth season with the Hornets.

**PAUL RUMBLE:** Born Hemel Hempstead, March 14th, 1969. Young left back, who has followed the club mould of attacking no. 3s, netting three goals for the reserves and twice for the youth team last season. Now back playing following a knee injury.

**STEVE TERRY:** Born Clapton, June 14th, 1962. Central defender who's made nearly 200 first team appearances for Watford, including playing in the 1984 Cup Final when only 21. Frequently pops up on the scoresheet. Out recently with a back injury.

## MIDFIELD:

**PETER HETHERSTON:** Born Lanarkshire, November 6th, 1964. Right-sided midfielder who also plays on the right wing. Signed in the summer for £50,000 from Scottish club Falkirk. Attracted Manager Dave Bassett's interest last season, and Peter is now Watford's only current Scottish player.

**KENNY JACKETT:** Born Watford, January 5th, 1962. Established full Welsh international, whose father, Frank, also played for Watford. Normally plays on the left side of midfield, but has also appeared at the back. Now back in action after tearing a calf muscle.

**GARY PORTER:** Born Sunderland, March 6th, 1966. Left-sided midfielder player who is now an England under-21 cap, having already represented his country at youth level. Made his Watford first team debut when only 17.

**CHRIS PULLAN:** Born Durham, December 11th, 1967. Tough-tackling right-sided midfielder player, who made his first team debut in the final game of last season, coming on as a substitute against Spurs.

**TIM SHERWOOD:** Born St. Albans, February 6th, 1969. Young right-sided midfielder who came through the junior ranks to sign as a professional last season. Made his first team debut at Sheffield Wednesday this season when he came on as a substitute and played the full game at Swindon last Wednesday.

## FORWARDS:

**TONY AGANA:** Born London, October 2nd, 1963. Signed just before the start of the season from non-League Weymouth, from whom he was on a trial period, but impressed enough on the pre-season tour of Sweden to be offered a contract and started the season in the first team. Scored Watford's goal at Swindon last week.

**MALCOLM ALLEN:** Born north Wales, March 21st, 1967. Full Welsh international and goalscorer, he plays off the central striker and has scored several vital first team goals for Watford. Spent a month on loan at Aston Villa, but is now back pushing for a regular first team place at Watford.

**LUTHER BLISSETT:** Born Jamaica, February 1st, 1958. Holder of the club career goalscoring record and the only current player to have played in all four divisions for the club. Full England cap and has an international hat-trick to his name.

**NEIL DOHERTY:** Born Barrow-in-Furness, February 21st, 1969. Young

front runner, who scored 20 youth team goals last season—and seven for the reserves. Will look to the current season to further make his mark.

**GLYN HODGES:** Born Streatham, April 30th, 1963. The club's most recent signing, Glyn joined Watford on September 28th from Newcastle in a £300,000 deal. He had previously been with Wimbledon, and so now teams up with his former manager, Dave Bassett. Glyn can fill a central midfield rôle, but is initially playing wide on the left. Welsh international, due to his father's nationality, he holds six full Welsh caps.

**DEAN HOLDSWORTH:** Born Walthamstow, November 8th, 1968. Central striker who has battled back after a serious knee injury that sidelined him for a year. Spotted with his twin brother, David, playing for the Redbridge District side.

**KEVIN RICHARDSON:** Born Waltham Abbey, August 14th, 1969. Youngest professional at the club, he is still eligible to play for the youth team. Normally fills a right wing spot.

**IWAN ROBERTS:** Born Bangor, June 26th, 1968. Welsh youth international who made his first team debut in March 1986, when only 17. Top scorer in the reserves last season, with 17 goals and is now emerging in the first team. Central striker.

**TREVOR SENIOR:** Born Dorchester, November 28th, 1961. Central striker who was signed from Reading in the summer for £325,000, following a prolific goalscoring record, which saw him net 123 goals in 201 appearances for the Berkshire club.

**WORRELL STERLING:** Born Bethnal Green, June 8th, 1965. Can play on either wing, he's now in his fifth season as a Watford professional. Product of the club's youth team, only injury prevented a call-up to the England under-21 squad last season.

# THIS IS THE DAY

## NOVEMBER 3rd

**ON this day in Watford's history, the following happened . . .**

**1928**—One of only three home League defeats as Bournemouth visit Vicarage Road and run out 3—0 winners. Eyre hits a hat-trick and nets twice more (one a penalty) in the return match later that season, as the sides share the points and six goals. That season saw tonight's visitors, Swindon, reach the FA Cup fifth round, only to lose 1—0 to Arsenal in a replay.

**1934**—Watford play their second match in a run of 15 without defeat (10 wins and five draws)—on this occasion a 3—1 home victory against Southend. Those with long memories might recall some of the following line-up: McLaren, Brown, Morgan, Findlay, Armstrong, Woodward, Rattray, Barnett, Lane, Lowe, Paxton.

**1951**—Millwall visit Hertfordshire for a Third Division South fixture, defeating Watford 2—1. The highest

home gate of the season (16,770) sees Meadows score for Watford, with Hartburn and Neary replying for the Lions.

**1956**—In Division Three North, Crewe Alexandra were in the middle of a record breaking run—30 games without a League win. Watford were having their own problems—31 years ago today Crystal Palace score a 4—1 away victory.



**On this day in 1979 Brian Pollard scored his last goal for Watford—it was at home to Leicester City in Division Two.** (Photo: Watford Observer)

**1962**—The FA Cup first round sees Poole Town visit Vicarage Road. Poole had already beaten Swanage 8—0, Warminster 10—1 and Weymouth 2—0 and held the Hornets to a 2—2 draw. Three days later however, a replay saw the Southern Leaguers defeated 2—1. Watford goalscorers Gregory and Harris.

**1973**—Aldershot travel to Hertfordshire, attempting to inflict upon the Hornets their fifth consecutive defeat. Watford had fallen to Chesterfield, Plymouth, Wrexham and Bournemouth, but managed a 2—1 victory over Aldershot. The Hornets' goalscorers Morrissey and Morgan. Ian Morgan had been transferred to Watford from Queens Park Rangers in October 1973, appearing on only 15 occasions for the Hornets. His goal against Aldershot was his only one in Watford's colours.

**1979**—Leicester City are on their way to the Second Division championship and promotion along with Sunderland and Birmingham. The Filbert Street side travel to Vicarage Road to take on the Hornets. Brian Pollard scores his last goal for Watford, and Trevor How plays his last game. Watford are defeated 3—1.

**1984**—A Saturday afternoon in Suffolk as the Hornets meet Ipswich Town at Portman Road. Blissett scores twice and Barnes once as the sides draw 3—3. This result sees Watford lying 21st and Ipswich 15th. Three years ago today Swindon Town defeated Rochdale 1—0 in Division Four with a goal from

Gordon, and move up to 13th place, finishing eighth at the end of the season.

●Compiled by Jonathan Elliott



**In the same game, Trevor How made his last appearance for the Hornets.**

(Photo: Watford Observer)

## Also on this day . . .

**1083**—Queen Matilda, wife of William the Conqueror, dies.

**1640**—Charles I calls a new Parliament and it becomes known as the Long Parliament until being dissolved in 1660.

**1903**—Panama is declared independent.

**1957**—A Russian dog, Laika, becomes the first living creature to travel in space.

## Today's birthday people:

Pop singer **Adam Ant** (34); Actor **Jeremy Brett** (52); Actor **Charles Bronson** (66); ex-World heavy-weight boxing champion **Larry Holmes** (38); Pop singer/actress **Lulu** (39).

**Hornets with birthdays around now:** November 6th **Peter Hetherston** (23); November 8th: **David and Dean Holdsworth** (19).

# THE MAGNIFICENT **Watford** **FIREWORKS**

to the music of Tchaikovsky's **1812 OVERTURE**

also featuring **SPECIAL EFFECTS LASER SHOW**

**WEDNESDAY**  
**NOVEMBER 4th 7.45pm**

**THURSDAY**  
**NOVEMBER 5th 7.45pm**

TICKETS  
ON SALE IN ADVANCE ONLY  
STANDING — Adults £2.50

— Children £1.00

SEATING — Adults £3.50  
— Children £2.00



**VICARAGE ROAD STADIUM WATFORD**

Available from: The Ticket Office, Watford Football Club, Vicarage Road Stadium, Watford, Herts.  
Telephone credit card bookings — Watford (0923) 220393

NS: This event will still take place in wet weather and will only be postponed in the event of extreme rain or lightning which make the stadium unsafe to use.

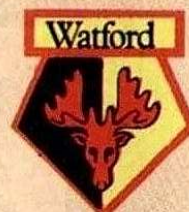
Wednesday, November 4th will take place on Monday, November 16th.

Thursday, November 5th will take place on Tuesday, November 17th.

**The safest way to watch fireworks**

# FIREWORKS

# SPONSORS



Match Gloves £40  
Tony Cotton—Frankie  
& Vi

◀ Complete Kit £150  
◻ Match Boots £40  
● Match Kit £40  
■ Training Boots £40  
▲ Training Kit £40  
☆ Tracksuit £40

If you'd like to fill one  
of the gaps in our kit  
sponsors list, 'phone  
Karen DuGard on  
Watford (0923) 30933.

## TONY AGANA

◻ Elton John

## MALCOLM ALLEN

◻ Peter & Colin Vandrill  
◻ Monica & Cyril Allen  
● Jane & Sue  
■ John & Ted Pascoe  
▲ Chesham Plating  
☆ Joe & Joan Pilling

## GARY CHIVERS

◻ Louise & Andrew Carter

## LUTHER BLISSETT

◻ Mr. & Mrs. S. Farebrother  
◻ The Swanson Family  
● Martin, Hilary, Kevin & Paddy  
■ Alan & Alan  
▲ Stephen Hall—Corsham, Wilts  
☆ Gavin & Giles Rickett

## TONY COTTON

◻ Frame One Photography of Hemel  
◻ Wyn & Linda Evans, Croyley  
● Richard & Roger Allen  
■ Elaine & Maurice Carter  
▲ Janice Batchelor  
☆ Stuart Stoker, Hong Kong

## NEIL DOHERTY

◻ Gary & Mick of Action Systems Ltd.  
◻ Chris & Nic  
● Brian & Kay  
■ Stephen & Suzanne  
▲ John & Anne Boyers  
☆ Cathy, Mary & Carol

## NIGEL GIBBS

◻ Clothes Care, Dry Cleaners of Bushey  
◻ Elbie & Maurice  
● Chris Young, Croyley, Gt. Green  
■ Monica & Ruth  
▲ Paul Western & Greg Collier  
☆ Judi Graham

## PETER HETHERSTON

◻ In fond memory of Gary Woods  
◻ Margaret, Jean & John  
● Mike Vince—The Voice of Watford  
■ Essex Estimating 04023 76933  
▲ Roy Guiney  
☆ Muriel & Jim Messiter—Amersham

## TIM SHERWOOD

◻ M. Winwood Ltd.  
◻ Robert Smith  
● Jo, Jeff, Emma, Laura Gavin  
■ John & Peter Heath  
▲ John & Hazel Warren  
☆ Jim & Shirley

## KENNY JACKETT

◻ A.J. Knight, Leverstock Green  
◻ The Supporting Savages  
● Supporting Camforth School Teams  
■ Lucy & Peter  
▲ Jenine & Ian  
☆ Bob Gritton & Joe Swain

## JOHN McCLELLAND

◻ Jimi-Heat Ltd, Jonelle & Caroline Reik  
◻ In memory of Mark Daniels  
● Ken & Andy Burrell  
■ Jeff & Stephen Western  
▲ MFN & RE Tame Ltd, Rickmansworth  
☆ Mole & Kay

## MARK MORRIS

◻ Holspur Kitchen Studio, Beaconsfield  
◻ Andrew & Brian Ladd  
■ Essex Estimating 04023 76933  
▲ Janet & Russell  
☆ The Speakman Family

## GARY PORTER

◻ M. Winwood Ltd.  
◻ Della & Debbie  
● Douglas & Mary Wren  
■ Sandra & Jon Cowan  
▲ The Aldens  
☆ Neil & Gracie Carter

## CLIFF POWELL

◻ Hugh & Sheila  
● Steve Brewer  
● Paula Osborne  
■ Lorraine Western  
▲   
☆

## CHRIS PULLAN

◻ Amanda Cornwell  
● Fifi & Fleckers  
■ Mima & Anne  
▲ The Bray Family  
☆ Karen, Karen, Claire & Lesley

## MEL REES

◻ Margaret & George Taylor  
◻ Roger Green & Michael Cavanagh  
● Bob & Kathy Elsden  
■ Neil Stevenson & Paul Andrews  
▲ Jean, Paul & Sue

## IWAN ROBERTS

◻ Richard & Barbara Foster, Monk's Walk School  
◻ Nicki & Jim Element  
● Bobs, Parker, Pooh, Tigger  
■ Christopher How & Karen Vickerstaff  
▲ Jean Cross & Mark Dumbleton  
☆ Vivien & Kevin Ratliff

## WILF ROSTRON

◻ M. Winwood Ltd.  
◻ Johanna, Kathryn & Roger Grunwood  
● Julie and Alec  
■ Jean, Paul & Sue  
▲ Janet & Colin  
☆ David

## TREVOR SENIOR

◻ Helen, Percy & Duke  
◻ "Cornwall"  
◻ Leon, Jason & Simon Shelley  
■ Julian & Keith  
■ In memory of Brian Culverhouse  
▲ Steve & Sue Saville Systems  
☆ Maureen & Alwyn Rickett

## WORRELL STERLING

◻ Paul Robinson  
● Kerth & Sue Hildreth  
■ Mollie & Peter Lambourne  
▲ Mr. & Mrs. Bishop  
☆ Eibel & Maurice

## STEVE TERRY

◻ Gary & Mick of Action Systems Ltd.  
◻ Robert Smith  
● Doug & Diana  
■ Peter, Ronnie, Matthew & Adam  
▲ Les Carpenter  
☆ Mats & Ivan

## GLYN HODGES

◻ Chantrey Wood King Chartered Accountants  
◻ Pat & Bryan Sharp, I.O.M.  
● Tim & Ed  
▲ Karen, Clive & Benjamin Golanski  
☆ Dave, Peter I. & Peter Powell

## DEAN HOLDS-WORTH

◻ Ray, Selina & Kelli  
● Action Systems Ltd.  
● Lesley, Claire, Karen & Karen  
■ John & Jan Carpenter  
▲ Karen & Rebecca

## PAUL RUMBLE

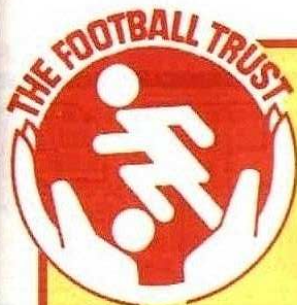
◻ Sophiah George Koikhus  
◻ Peter & Karen Smith  
● Pam & Trevor Champ  
■ The Jager Family  
☆ The Two Jans

## DAVID HOLDS-WORTH

◻ Action Systems Ltd.  
● Lesley, Claire, Karen & Karen  
■ John & Jan Carpenter  
▲ Karen & Rebecca

## KEVIN RICHARDSON

◻ Russell & Kevin  
● Karen & Viv Gurney  
■ The Bennetts



## WARNING TV SURVEILLANCE

*This ground is equipped with*  
**CLOSED CIRCUIT  
TELEVISION**

Installed with the help of a grant from the Football Trust. It is there to increase crowd safety and to help the police. Recording facilities enable film and photographs to be taken of disorder, which may subsequently be used in a court of law.

The Football Trust is funded entirely by the pools companies Littlewoods, Vernons and Zetters from their Spotting-the-Ball competition.

**COLOUR YOUR LIFE  
WITH**

# FOCUS

NOW A FREE WEEKLY MAGAZINE!  
OFFERING FULL COLOUR AND  
BLACK AND WHITE ADVERTISING.

THE POSSIBILITIES ARE NOW ENDLESS.  
FOR DETAILS TELEPHONE:

**01-950-6161**

## REFEREES WANTED



Throughout the country local football depends on the services of keen, dedicated people who make a vast contribution to the national game as referees, enabling players to more easily enjoy their matches.

**CAN YOU HELP?** Every year more clubs are registered with The Football Association. There are more and more matches to which referees must be appointed.

**CAN YOU HELP?** If you have played the game at any level you will know how important it is to have a qualified referee present.

**CAN YOU HELP?** If you are physically fit, with good eyesight and are at least fourteen years of age and willing to attend a local course of instruction, in preparation for a straight forward examination,

**WILL YOU HELP?** If you are interested in accepting the challenge of refereeing local football matches PLEASE CONTACT:

**THE FOOTBALL ASSOCIATION  
16 LANCASTER GATE, LONDON W2 3LW.**

quoting referee recruitment or  
your local County Football Association.  
Don't forget that today's top referees all started at this level.  
This is the first rung on the ladder.

# REVIEW

Group Newspapers

**Advertisers  
judge us by  
results . . .  
they have  
not been  
disappointed!**

**No 1  
in Herts**



WHO'S  
THE

# GREATEST?

**Today, Oliver Phillips, Sports Editor of the Watford Observer, continues his "Who's The Greatest?" series with the first part of his assessment of Watford's midfielders.**

FOOTBALL is full of theory and there are those in the game who do not like the labels of 4-3-3, 4-4-2 or 4-2-4. They argue, with some validity, that if you freeze a game at any stage, you will find it hard to determine an exact formation to complement the mathematical figures.

Talking of the old 'W' formation, you never actually see it put into figures. Yet essentially it was a 3-2-2-3 formation with the full backs and centre half holding the back line, the wingers and centre-forward leading the

front. Between them were the wing halves and inside forwards, who covered the 'box' that stretched across the pitch in front of the full backs and behind the wingers.



Ray Lugg—signed from Middlesbrough in the early 1970s.

(Photo: Universal Pictorial Press)

You cannot fix an exact date when the basics of the old approach gave way to the subtle changes of the modern game. The development of a three and four-man midfield, meant that each, in practice, would have more running to do, ball-winning became an essential requirement for almost every player who operated in midfield. Thus,

such as Tommy Harmer down to Dennis Bond, who were not strong in this department, were regarded as luxuries in some quarters.

So, with the changes in midfield, came a new genre of midfield men, working across, almost as much as they toiled up and down.

Yet, when looking at the midfield men of the last two-and-a-half decades, ironies rear their heads. For a start, Watford have spent much of the last 10 years, operating with two in midfield. Then again, when there have been more than two men contesting issues in the middle of the pitch, these have fallen into various categories.

You had the essentially creative players such as Bond; the ball-winners like Roger Joslyn; the men who kept the pot-boiling, like Dixie Hale, or those who played from in-to-out, breaking forward on the wing or splitting the front strikers, such as Ray Lugg or Martin Patching.

All this adds to the confusion, so, to simplify the problem, in this article and the next, we will list the midfield players at Vicarage Road who have performed over the last 20-odd years and from that complete list, you can select three. After all, we are looking for an ultimate squad of 'greatest players'

who could win as many games in the 1920's as they could today. If you feel the midfield men could have been wing-halves or inside-forwards (who will be dealt with individually later), then so be it. Football is a game of opinions, but for the sake of argument, we will pretend that midfielders were 'invented' in the 1960's.

If that gives the ultimate squad, a higher proportion of recent players, then that fits in neatly with the length of our memories.



Dennis Bond—stylish midfielder of the 1960s.

(Photo: Watford Observer)

Dennis Bond was a home-grown product who had three spells with Watford (one on loan). Work-rate was not his strong-point and some questioned his ultimate application. Others, myself included, accepted that he faded in and out of the game, but felt his contributions were so perceptive during his positive spells, that he could

8

MIDFIELDERS

PART ONE

turn a game, and you would overlook the quieter moments. Feeding the wingers with the outside of his foot, letting the ball beat the man as he feinted over it and playing perfect one-twos on the edge of the box, were the tricks among his repertoire.

**Alec Farrall** was a player of similar stature, but short of Bond's class. An ex-Evertonian, he came from Lincoln and was a player who made the simple, tidy, unassuming pass that kept the pot boiling.



**Keith Eddy**—midfield man who captained the Division Three championship-winning side of 1968-69. (Photo: Universal Pictorial Press)

The development of midfielders also introduced us to the term "players' player"; a euphemism for someone who did not look particularly impressive and was seldom noticed, doing "a lot of unseen work". Spotting and appreciating the "players' player" increased the tendency towards football 'snobbery' on the terraces. Those who could spot the 'unseen work', claimed to have a greater insight and appreciation of the finer points while the rest of us tried to fathom out why the player was in the team at all.

Farrall was one such player

and there were others, who did not seem to catch the managers' eyes for long either.

**Dixie Hale** was a "players' player" but his contributions were more apparent to the onlooker, (or were we coming to terms with the genre?). He ousted the purportedly more fashionable ex-Spur, Roy Low, who was stronger, possessed a shot and had better control, but nowhere near the appetite of the little man from Workington.

Dixie seldom hit a pass over 10 yards (the exception being a memorable Saturday night at Swindon) and literally deserved his Rookery End accolade which, in its more printable form, suggested that Dixie Hale was here, there and everywhere.

He was a vital cog in the successful promotion push in 1969, balancing perfectly alongside **Tom Walley**, a biting tackler, who had a tendency towards hitting the longer ball. Tom's ace was that he had a good left foot, a facet which was in short supply in those days. He was an all-action man, with mesmerising enthusiasm and stamina. It would have been fascinating to have been able to see, the impossible, Tom and Les Taylor, marking each other in their prime.

**Keith Eddy**, like Tom, was a 'leggy' player, perhaps more comfortable on the ball, but less effective at winning it. He possessed a certain 'majesty' in the context of the time and standards.

That promotion side, and indeed the subsequent team in Division 2, also included **Terry Garbett** in midfield. He

had great lung-capacity. Signed from Middlesbrough, I thought him a mediocre striker, but he found his niche in midfield, breaking forward in a central position, much in the way Martin Patching was to do years later.



**Terry Garbett**—another midfield member of the 1968-69 title side. He scored Watford's goal in the 1969-70 FA Cup semi-final against Chelsea. (Photo: Watford Observer)

He was a tireless worker and when Hale moved on, Garbett earned his spurs. Ken Furphy also looked at other options. **Ray Lugg**, another from Middlesbrough, played a more withdrawn wing role at Watford, but, apart from a brilliant display against Liverpool in the FA Cup, he did not make a great impact.

The same could also be said for another of Furphy's midfield men **Roy Sinclair**. He

had quality but Division 2 proved beyond him. He was signed from Tranmere at the end of the promotion season, after giving Eddy the runaround in midfield on a night better remembered for Brian Owen's goal "in-off the floodlights".

**Jimmy Lindsay** was one of the club's rare imports from West Ham and worked hard and inventively in midfield during the leaner years. He liked to break forward and at one stage was Watford's leading scorer when goals were hard to come by.



March 13th, 1969 and Manager Ken Furphy gets Roy Sinclair to sign on the dotted line from Tranmere Rovers. (Photo: Watford Observer)

## NOW CAST YOUR VOTE...

### ... but not this week!

Because this article is in two parts, as it covers a lot of Watford players, we're going to ask you to select three midfielders from the nominations list that will be published in the next programme, with Part Two of this article.

After the last part of the "Who's The Greatest?" series, we'll be giving you a deadline by which to send in your complete list. Please note we are asking you to judge players while they were at Watford—not at other clubs.

For the three supporters who get nearest to the judges' selections, there will be a pair of executive days out at Watford, plus a team shirt autographed by all the players, and £25 worth of vouchers to spend at the Hornet Shop.

# JUNIOR HORNETS



## JHs on the move

LAST week took the Junior Hornets from Swindon to Wembley in the space of a few hours—let's hope the team make it to Wembley via Swindon as well.

"We took a party of JHs to the Littlewoods Cup tie last week and didn't get back until about midnight," explains Ann Swanson, who runs the Junior Hornets. "Then early next morning, we were on the road again—firstly to watch the reserves and youth team train at the training ground in Stanmore, and then on to Wembley for a tour of the stadium.

"Then we got back to Watford to catch up with the first team who had been training at the ground. All in all a very busy 24 hours.

"Tonight we welcome John Timms, his family, and the Junior Robins from Swindon Town, who have made the trip up from Wiltshire. We hope they have an enjoyable night—but not too enjoyable!"

## Prizes to win

LOOK out in the next programme (v. Charlton, November 14th), for a competition in which you can win £25 to spend in the Hornet Shop—and be served by your favourite Watford player.

Also you've still time to enter the Panini competition that was announced in last Saturday's programme. Just ensure your Football '87 is complete by the match against Arsenal on Saturday, November 28th—and you can enter the free prize draw for a Panini tracksuit, compete kit, sportsbags and runners-up prizes too.

## Event next Monday

NEXT Monday, when Watford's youth team play Norwich City in the Southern Junior Floodlit Cup, Junior Hornets can sit in the Family Enclosure—for free.

All you do is produce your Junior Hornets membership at the Family Enclosure turnstile. Parents

can sit in the Family Enclosure too, but the normal admission price of £1.00 applies. This offer applies to Junior Hornets who sit in the Family Enclosure—not elsewhere.

## Next Club Night

A reminder that the next JH Club Night is on Thursday, November 19th in the Aldenham Club at the stadium.

The evening starts at 6.30 pm sharp and you'll be able to meet some of the Watford players, a member of the club's backroom staff and an international from another club. Parents are welcome as well, and can use one of the club's bar facilities, which will be open on the night.

The Junior Hornets is a special club for all fans under 16. For details of membership call in at the Marketing Department or 'phone Watford (0923) 53836 during office hours.

## BEST WISHES

HAPPY Birthday to all those Junior Hornets listed below. Ages are in brackets, and the dates are all in November.

1st Paul Twitchell (15), Steven Golding (14), Nicholas Lee (13), Jonathan Darchez (11), Daniel Jones (10), Matthew Potter (9), Rachel Clark (8). 2nd Matthew Thompson (15), Craig Walker (13), Lee Groves (12), Christopher Miles (10), Matthew Ginn (9), Benjamin Walter (9), Jason Weinrabe (8), Duncan Willits (8). 3rd Michael Wood (16), Gregory Chase (11), Russell Williams (10), Loraine Brewster (9), Peter Halewood (8), Marie-Anne Anthony (5). 4th Christian De Groot (16), Miles Jacobson (16), Robert Scholefield (15), Darren Anderson (14), Jacqueline Connor (14), Steven Creek (14), Peter Cleaver (13), Jason Smith (13), Nadine Whitebread (13), Luke Phelps (11), Michael Thurgood (11), Paul Fourmy (9). 5th Michael Jones (16), Mark Bennell (12), Marcella Turk (12), Paul Dumbleton (9), Ross Watson (9), John Allen (8), Richard Chambers (8), Stuart Turney (8), Alice Canham (3), Thomas Leahy (3). 6th Scott Ginger (12), Benjamin Saunders (12), Robert Walker (9), Robert Payne (8). 7th Andrew Disney (16), Richard Sayers (15), Daniel Aldridge (13), Andrew Beere (13), Dean Mason (13), Scott Munro (13), Joanna Halkett (12), Barry Mason (10), Ian Woolman (10), Toby Hancock (9), Sara Hargreaves (9). 8th Christopher Martin (15), Nicholas Davidson (16), Gary Smith (13), Michael Bell (11). 9th Trevor Goodchild (15), Stuart Hutchinson (15), E. Moore (12), Philip Moore (11), Gavin Schaffer (11), Paul Vincent (11), Stuart Glassborow (10), Matthew Ross (10), Alexander Young (9), Jonathan Warner (8), Daniel Simpson (3). 10th Steven Willmer (16), David Ingram (15), Simon Button (14), Stewart Warner (14), Matthew Barnett (11), Alan Cant (10), Gavin Byrne (9), Mark Butler (5), Thomas Brown (2). 11th Darren White (15), Kevin Grimes (13), Stephen Carter (11), Susannah Cooke (11), Paul Owen (11), Kevin Affleck (9), Graham Feasey (8).

We will try as far as possible to list all Junior Hornets birthdays that fall in the football season, but we may have to miss some to ensure we keep pace with the dates of the matchday programme.

# PROMOTION

# Push

## TOP DRAW—THAT'S WHAT FRIENDS ARE FOR . . .

FROM carriage clocks to carriages in the Royal Parade at Ascot, this year our valuable Top Draw incentive prizes are every bit as imaginative.

It wasn't easy to follow prize days that included a day at the Grand National, an Orient Express trip to Bath and a supersonic Concorde flight, but we've managed it—and all you have to do is introduce some of your friends to our fund raising scheme.

In fact, just one friend will do, and after they've been a Top Draw member for 13 weeks you can choose between a carriage clock and an elegant cut glass whisky decanter.

Persuade another two people to join us and we'll add a stereo cassette/radio or a pocket camera to your prize collection!

Tickets for London's smash hit musical are as elusive as the Phantom of the Opera himself—unless you have five friends who wish to become members of Top Draw. If that's the case, you and a guest will be enjoying a spectacular night out at the theatre, followed by a candlelit dinner in a top London restaurant.

If you're very sociable, then a day out at Royal Ascot will be an unforgettable date for your diary, and the introduction of eight new members should be an easy way to enjoy it.

We'll take you and a guest to the races on a luxury executive coach and provide a champagne lunch on the way. You'll view the famous Royal Parade then take your complimentary £10 bet and enjoy a full day's racing with plenty of food and champagne to help you along the way. And to finish the day in style there's evening dinner at a local hotel.

Our top prize this year is a luxury weekend for two in Paris, one of the world's most fascinating cities. We'll fly you there to a top class hotel if you introduce just 12 new Top Draw members. The Champs Elysee, elegant shops and street cafes can all be visited, try a trip down the Seine in a Bateau Mouche, or a night to remember in the Moulin Rouge. It's up to you—and down to 12 of your friends to help you win this outstanding prize.

*We've got plenty of application forms in the Marketing Department, (tel: Watford (0923) 225761) so why not start introducing your friends to Top Draw right away? Don't forget to put your name on each form so that we know to contact you when you're won a prize. There are no tie-breakers to enter either, with Top Draw it's who you know, not what you know that counts . . .*

## Latest "Top Draw" winners

### Week No. 45: September 5th

£500—N. Alwyn, Pomeroy Crescent, Watford . . . . .	0588
£50 —Geoff Taylor, Watford FC . . . . .	0004
£25 —David Harrison, Vernon Road, Bushey . . . . .	0823
£25 —Arthur Sadler, St. Anthony's Ave, Hemel Hempstead . . . . .	0366
TV —M. Horwood, Curtis Close, Mill End . . . . .	0886

### Week No. 46: September 12th

£500—R. Monday, George Street, Maulden, Beds . . . . .	0350
£50 —Mrs. Stratford, Church Lane, Sarratt . . . . .	0503
£25 —K. McGovern, Abbey Road, Popley, Basingstoke . . . . .	0679
£25 —J. Foslett, Ashdown Road, Bushey . . . . .	0431

### Week No. 47: September 19th

£500—Wally Harwood, Alpine Press, Kings Langley . . . . .	0083
£50 —Ruth Davis, Bridgewater Road, Berkhamsted . . . . .	0349
£25 —Richard Millard, Glenferrie Road, St. Albans . . . . .	0472
£25 —Rob Jenkins, Grappenhall Road, Stockton Heath, Warrington . . . . .	0093

### Week No. 48: September 26th

£500—Horace Carpenter, Balmoral Road, Watford . . . . .	0523
£50 —R. Brazier, Brightwells Farm, Vicarage Road . . . . .	0640
£25 —A. Poot, Linden Avenue, Eastcote, Ruislip . . . . .	0196
£25 —Colin Barber, Chalfont Road, Maple Cross . . . . .	0650
TV —Eric Annal, Spring Garden, Watford . . . . .	0214

### Week No. 49: October 3rd

£500—Brian Cockell, Clifton Road, Watford . . . . .	0913
£50 —F. Byford, Windsor Close, Welwyn, Herts . . . . .	0577
£25 —Thomas O'Donnell, Boundary Way, Watford . . . . .	0299
£25 —R. Cox, Dawes Lane, Sarratt . . . . .	0489

### Week No. 50: October 10th

£500—David Turner, Moor Lane, Rickmansworth . . . . .	0221
£50 —D. Rand, Churchill Road, St. Albans . . . . .	0515
£25 —Kevin Ratcliff, Colne Way, North Watford . . . . .	0353
£25 —Thomas Roberson, Dukes Wood Drive, Gerrards . . . . .	0701

### Week No. 51: October 17th

£500—Steve Dunham, Firtree Close, Hemel Hempstead . . . . .	0017
£50 —S. Simmonds, Epping Green, Hemel Hempstead . . . . .	0189
£25 —B. Miles, Trus Lovers Knot, Northwood . . . . .	0495
£25 —Geoffrey Young, Thorpe Crescent, Watford . . . . .	0954

### Week No. 52: October 24th

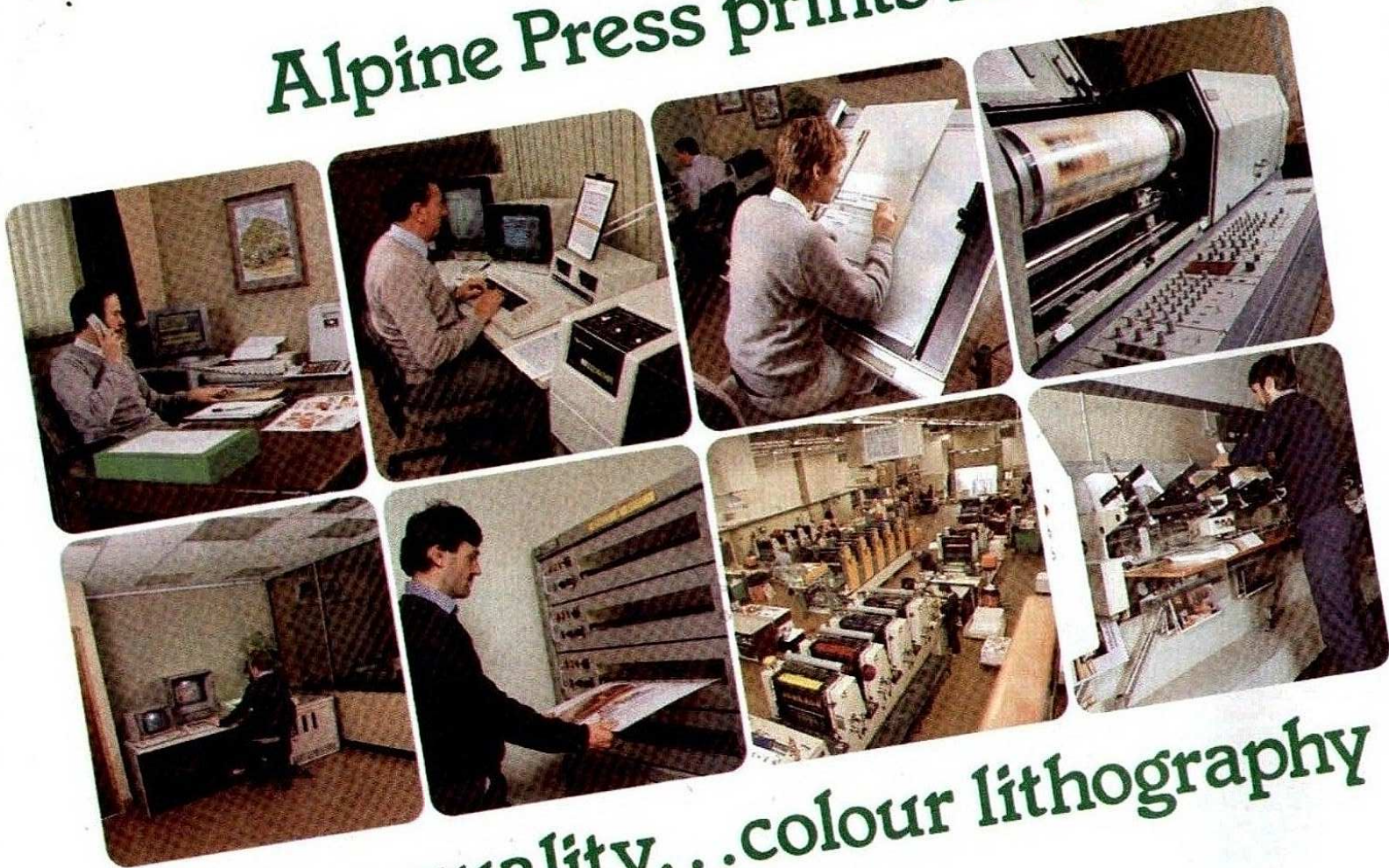
£10,000—Roger Hudson, Fisher Close, Kings Langley . . . . .	0827
Saloon Car—Chris Clayton, Hawthorn Way, St. Albans . . . . .	0343
£250 holiday—W. Alleguen, Turks Head, Harlington Road, Hillingdon . . . . .	0695
TV—E. Tobia, Munden View, Garsmouth Way, Watford . . . . .	0132
£500—P. Stratford, The Western Inn, High Street, Rickmansworth . . . . .	0301
£50 —R. A. Gilbert, The Compasses, Tibbs Hill Rd, Abbots Langley . . . . .	0547
£25 —Anthony Gatehouse, Ashtree Way, Boxmoor, Herts . . . . .	0266
£25 —V. Randall, Rickmansworth Road, Watford . . . . .	0272

● Tonight the draw will take place for Week no. 1 of Top Draw Year Two and all current members will continue to have their existing numbers entered in the draw.

The top prize every week is now £600, with additional cash prizes of £50, four of £25 and four of £10. There are lots of other prizes to be won during the year—and for a full list and more details on Top Draw, leaflets are available now from the Matchday Information Centre or during the week from the Marketing Department.

Standing order and credit card payments for Top Draw subscriptions will automatically continue to be debited unless the Marketing Department is notified to the contrary. All cancellations, including cash and cheque payments, must be confirmed in writing to the Marketing Department. Of course, we don't expect any cancellations!

**Alpine Press prints for you ...**



**...top quality...colour lithography**

## **Alpine Press**

Station Road Kings Langley Hertfordshire WD4 8LF  
Telephone Kings Langley 69777



# TEAM SHORTS

## "Teacher For A Day"

WATFORD'S Assistant Manager Alan Gillett and club captain John McClelland (he seems to be getting a lot of mentions on this page), recently took part in the "Teacher For A Day" scheme at Durrants School, Croxley Green.

Through the scheme people involved in various walks of life were asked to literally become teachers for a day, and bring the teaching techniques they have acquired to bear on a school environment. Thirty people were asked to



become temporary teachers in a scheme which has the central benefit of exposing the pupils to lots of different industries and so help their career choices.

Alan and John are seen directing operations in the photograph above and

over lunch they were able to discuss their day with other "visiting lecturers" who included representatives from the Outward Bound Trust, Grendon Underwood Prison, the Watford Fire Station, and a journalist from The Independent.

## Injury free?

FINGERS crossed, but at the last time of asking Physiotherapist Derek French only had two players on the treatment table.

They were defenders Steve Terry and John McClelland. "Steve Terry suffered a back injury after twisting in training a couple of weeks ago, but he was back in full training last Friday. John meanwhile suffered a groin strain in the game at Swindon, but by the time you read this he could be playing again.

"As you'll have read in the programme last Saturday, Tony Coton is playing in some discomfort with a broken little toe—but that's a question of watching over it and waiting until it heals."

## Milestones

LEFT back Wilf Rostron became the first player in the club's history to make 200 First Division appearances for Watford when he played here against West Ham last Saturday.

His first top flight appearance was in the club's opening game in Division One—on August 28th, 1982 against Everton.

Meanwhile left-sided midfielder Kenny Jackett made his 250th League appearance for Watford at Everton 10 days ago.

## Tim's early impressions

MIDFIELDER Tim Sherwood, still only 18, has recently made his way into the first team frame,

making his full League debut at Everton 10 days ago and then playing against Swindon last week in the Littlewoods Cup.

"I feel I can do a lot better," he admits. "The pace of the game is much quicker and there have been times when I've released the ball when I probably had more time to consider what to do. I'm playing more of a central midfield rôle than I do for the reserves, and I'm encouraged to get into shooting positions as often as possible. I hope my debut goal isn't far away."

Meanwhile, before his inclusion in first team matters, Tim was asked to attend the forthcoming trials for the England

under-19 side, to which David Holdsworth has also been invited.

## Malcolm's other life

AWAY from Watford, striker Malcolm Allen, who returned to the first team at Swindon last week, undertakes the coaching of a local boys' side.

And very successful it's been, as Malcolm reveals: "The team are Garston Boys' under-11 side, who a friend of mine, John Cooke, asked me to coach. So far, the boys have been playing in a round-robin League. They've won all five matches and so have gone up into a higher League. I coach them on Thursday evenings when I'm free and it's very enjoyable."

# FACTS AND FIXTURES

## Barclays League Division One

	P	W	D	L	F	A	W	D	L	F	A	Pts
1 Liverpool	11	6	0	0	19	2	4	1	0	12	4	31
2 Arsenal	13	5	0	1	15	4	3	2	1	8	4	29
3 QPR	13	5	1	0	11	3	4	1	2	8	8	29
4 Nottm F.	13	3	2	1	10	4	5	1	1	14	7	27
5 Man Utd.	14	4	3	0	12	6	2	4	1	12	9	25
6 Chelsea	14	6	1	0	15	7	2	0	5	9	14	25
7 Everton	14	5	1	1	14	4	1	3	3	7	7	22
8 Tottenham	14	5	0	2	12	7	1	2	4	4	9	20
9 So'oton	13	2	2	2	7	8	2	3	2	12	12	17
10 Oxford U.	13	4	0	2	14	10	1	2	4	4	11	17
11 Derby Co	13	2	2	3	5	5	2	2	2	6	9	16
12 Coventry	13	2	1	4	7	14	3	0	3	7	7	16
13 Wim'don	12	1	3	1	8	6	3	0	4	7	9	15
14 West Ham	13	1	4	2	6	8	2	2	2	8	8	15
15 Newcastle	12	1	1	4	5	10	2	3	1	10	9	13
16 Portsm'th	13	3	2	2	11	11	0	2	4	3	16	13
17 Luton T.	13	2	3	2	8	7	1	0	5	6	12	12
18 Sheff W.	14	2	1	4	8	12	1	2	4	6	15	12
19 Norwich C	14	2	2	3	8	9	1	0	6	2	10	11
20 <b>WATFORD</b>	12	1	2	3	3	7	1	0	5	3	9	8
21 Charlton	13	1	1	5	4	11	0	2	4	6	13	6

(up to and including Sunday, November 1st, 1987)

## First Team Update

Up to 2/11/87	League Aps Gls	L Cup Aps Gls	S Cup Aps Gls	FA Cup Aps Gls	Totals Aps Gls
Agana	8(3)	1(1)	2		9(4) 2
Allen	1(1)	1	1		2(1) 1
Bardsley	4				4
Blissett	6(2)	1	1(1)	1	7(3) 2
Chivers	3	1			4
Coton	12	3			15
Gibbs	12	3	2		15 2
Hetherston	1(1)	1(1)	2		2(2) 2
Hill	2(2)				2(2)
Hodges	4	2	1		6 1
Jackett	7	1			8
McClelland	12	3			15
Morris	12	3			15
Porter	11(1)	2	2(1)	1	13(2) 3
Roberts	5(5)	2(1)	1		7(6) 1
Rostron	10(2)	3			13(2)
Senior	11	1	2	1	13 2
Sherwood	1(2)	1			2(2)
Sterling	5	1	1		6 1
Terry	5	2	1		7 1

Key: Playing substitute in brackets; S Cup = Simod Cup.

## S. Mirror Combination

	P	W	D	L	F	A	Pts
1 WATFORD	11	9	0	2	27	8	18
2 QPR	10	8	1	1	25	9	17
3 Arsenal	10	7	1	2	22	8	15
4 Portsmouth	10	7	1	2	30	19	15
5 Tottenham	10	7	1	2	25	14	15
6 Luton	10	6	2	2	24	16	14
7 So'ton	11	6	1	4	23	13	13
8 Norwich	10	5	2	3	24	15	12
9 Millwall	11	4	4	3	22	13	12
10 Chelsea	11	4	3	4	21	13	11
11 Ipswich	10	2	5	3	19	16	9
12 West Ham	10	4	1	5	18	19	9
13 Charlton	10	3	3	4	13	18	9
14 Oxford Utd.	11	4	1	6	26	33	9
15 Fulham	10	2	3	5	15	27	7
16 Brighton	11	3	1	7	10	28	7
17 Swindon	9	2	1	6	11	25	5
18 Reading	11	1	2	8	15	35	4
19 C. Palace	8	1	1	6	4	19	3
20 Bristol R.	12	0	2	10	10	36	2

(up to and including Mon. November 2nd)

## Combination Diary

A Aug. 18 QPR	W 1-0
A Aug. 28 Norwich City	W 3-2
A Sept. 2 Millwall	L 0-1
H Sept. 9 Crystal Palace	W 1-0
H Sept. 12 Tottenham H.	W 2-1
A Sept. 15 Swindon T.	W 2-0
A Sept. 22 Bristol Rovers	W 4-1
H Oct. 3 Southampton	W 2-0
A Oct. 20 Letchw'th (HSC-1)	W 4-1
H Oct. 24 Oxford United	W 4-0
A Oct. 26 Brighton	L 1-2
A Oct. 31 Reading	W 7-1
H Nov. 7 West Ham United	
A Nov. 11 Ipswich Town (Wed)	
H Nov. 21 Charlton Athletic	
A Nov. 28 Arsenal	
H Dec. 5 Luton Town	
A Dec. 8 Fulham (Tues)	
A Dec. 15 St. Albans (HSC-2)	
H Dec. 19 Portsmouth	
H Jan. 5 QPR (Tues)	
H Jan. 16 Norwich City	
A Jan. 27 Crystal Palace (Wed)	
H Jan. 30 Millwall	
H Feb. 6 Swindon Town	
A Feb. 13 Tottenham H.	
H Feb. 20 Bristol Rovers	
A Feb. 27 Southampton	
A Mar. 5 Chelsea	
H Mar. 12 Brighton & H.A.	
A Mar. 16 Oxford United (Wed)	
H Mar. 19 Reading	
H Mar. 22 Ipswich T. (Tues)	
A Apr. 2 West Ham United	
A Apr. 5 Charlton Ath. (Tues)	
H Apr. 16 Arsenal	
H Apr. 23 Fulham	
A Apr. 30 Luton Town	
A May 3 Portsmouth (Tues)	

To be arranged: Chelsea (h)

## South East Counties League Division One

	P	W	D	L	F	A	Pts
1 WATFORD	14	11	1	2	43	14	23
2 Spurs	13	9	2	2	31	12	20
3 QPR	14	7	4	3	21	17	18
4 Arsenal	12	8	1	3	44	19	17
5 Chelsea	12	7	3	2	35	13	17
6 West Ham	11	5	4	2	24	12	14
7 Charlton	11	6	2	3	22	17	14
8 Ipswich	13	7	0	6	22	26	14
9 Portsm'th	13	6	1	6	35	27	13
10 Millwall	14	5	3	6	24	32	13
11 Southend	12	5	1	6	23	29	11
12 Leyton O.	14	4	3	7	12	24	11
13 Gill'ham	13	3	2	8	17	29	8
14 Norwich	11	2	3	6	11	27	7
15 Fulham	13	0	2	11	6	34	2
16 Cambridge	14	1	0	13	14	52	2

(up to and including Sat. October 31st)

H Aug. 15 Norwich City	W 4-1
H Aug. 20 QPR	L 1-2
A Aug. 22 West Ham United	W 4-0
A Aug. 29 Tottenham H.	W 2-1
H Sept. 1 Portsmouth	W 6-2
H Sept. 5 Ipswich Town	L 2-3
A Sept. 7 Charlton Ath.	W 2-1
A Sept. 12 Millwall	D 1-1
H Sept. 14 North'ton (SJFC-1)	W 3-2
A Sept. 19 L. Orient	W 2-0
H Sept. 26 Gillingham	W 4-1
H Oct. 3 Southend Utd	W 3-1
A Oct. 10 Cambridge Utd	W 5-0
H Oct. 17 Fulham	W 4-0
A Oct. 24 Arsenal	W 3-1
A Oct. 31 Spurs (SECLC 2)	L 1-2
H Nov. 7 L. Orient	
H Nov. 9 Norwich (SJFC-2)	
A Nov. 14 Chelsea	
A Nov. 21 Norwich City	
A Nov. 28 QPR	
H Dec. 5 West Ham United	
H Dec. 12 Charlton Ath.	
? Dec. 19 SECLC 3	
H Jan. 2 Tottenham H.	
A Jan. 9 Portsmouth	
A Jan. 16 Ipswich Town	
H Jan. 23 Millwall	
A Jan. 30 Gillingham	
A Feb. 6 Southend United	
H Feb. 13 Cambridge Utd.	
A Feb. 20 Fulham	
H Feb. 27 Arsenal	
H Mar. 12 Chelsea	

Key: SECLC: South East Counties League Cup; SJFC: Southern Junior Floodlit Cup; FAYC: FA Youth Cup.

# WATFORD Res Pos Att 1 2 3 4 5 6 7 8 9 10 11 Sub(s)

AUGUST																
15	Wimbledon	W 1-0	—	15,344	Coton	Gibbs	Rostron	Jackett	Morris	McClelland	Bardsley	Blissett1*	Senior	Porter	Agana	Hill/Roberts ●
19	Nottingham Forest	L 0-1	—	14,527	Coton	Gibbs	Rostron	Jackett*	Morris	McClelland	Bardsley*	Blissett	Senior	Porter	Agana	Allen ●/Hill ●
22	Manchester United	L 0-2	14	38,522	Coton	Gibbs	Rostron*	Jackett	Morris	McClelland	Sterling*	Blissett	Senior	Porter	Agana	Hill ●/Roberts ●
29	Tottenham Hotspur	D 1-1	15	19,073	Coton	Gibbs	Jackett	Hill*	Morris	McClelland	Bardsley	Blissett	Senior*	Porter1	Agana	Rostron ●/Roberts ●
SEPTEMBER																
5	Norwich City	L 0-1	19	11,724	Coton	Gibbs	Jackett*	Hill*	Morris	McClelland	Bardsley	Blissett	Senior	Porter	Agana	Rostron ●/Roberts ●
12	Sheffield Wed.	W 3-2	15	16,144	Coton	Gibbs	Rostron	Morris	Terry	McClelland	Chivers*	Roberts	Senior1*	Porter1	Sterling1	Sherwood ●/Agana ●
19	Portsmouth	D 0-0	13	13,277	Coton	Gibbs	Rostron	Morris*	Terry	McClelland	Chivers	Roberts	Senior	Porter	Sterling	Hetherston/Blissett ●
22	Darlington (LC 2r, 1l)	W 3-0	—	5,005	Coton	Gibbs1	Rostron	Morris	Terry	McClelland	Chivers*	Roberts	Senior1*	Porter1	Sterling	H'ston ●/Blissett ●
26	Chelsea	L 0-3	16	16,213	Coton	Gibbs	Rostron*	Morris*	Terry	McClelland	Chivers	Roberts	Senior	Porter	Sterling	H'ston ●/Blissett ●
OCTOBER																
3	Coventry City	L 0-1	16	16,111	Coton	Gibbs	Rostron	Morris	Terry	McClelland	Sterling	Agana	Senior*	Porter	Hodges	Roberts ●/Chivers
6	Darlington (LC 2r, 2l)	W 8-0	—	8,186	Coton	Gibbs1	Rostron	Morris	Terry1	McClelland	Hetherston2	Blissett1	Roberts1	Porter	Hodges1	Agana1 ●/Chivers
17	Southampton	L 0-1	19	11,933	Coton	Gibbs	Rostron	Morris	Terry	McClelland	Hetherston*	Blissett	Roberts	Porter*	Hodges	Jackett ●/Agana ●
24	Everton	L 0-2	20	28,501	Coton	Gibbs	Rostron	Jackett	Morris	McClelland	Agana	Roberts*	Senior	Sherwood	Hodges	Porter ●/Blissett
28	Swindon (LC 3r)	D 1-1	—	13,833	Coton	Gibbs	Rostron	Jackett	Morris	McClelland	Agana1*	Allen	Senior	Sherwood*	Hodges	Porter ●/Roberts ●
31	West Ham United	L 1-2	20	14,427	Coton	Gibbs	Rostron	Jackett	Morris	McClelland	Agana*	Allen1	Senior	Porter	Hodges	Sherwood ●/Roberts

**KEY**  
 1 Denotes goalscorer  
 ● Substitute used  
 ‡ Opponent own goal  
 \* Player substituted  
 (p) Penalty  
 aet After extra time  
 LC: Littlewoods Challenge Cup  
 SC: Simod Cup  
 Home matches and scorers in heavy type  
 Watford score given first

**NOVEMBER**  
 7 Queens Park Rangers  
 14 Charlton Athletic  
 17 L'woods Cup 4  
 21 Oxford United  
 24 Liverpool (Tues)  
 28 Arsenal

**DECEMBER**  
 5 Derby County  
 12 Luton Town (AT)  
 26 Sheffield Wed.  
 28 Portsmouth

**JANUARY**  
 1 Tottenham Hotspur (Fri)  
 2 Manchester United  
 9 FA Cup 3rd Rd  
 16 Wimbledon  
 19/20 L'woods Cup 5  
 23 Nottingham Forest  
 30 FA Cup 4th Rd

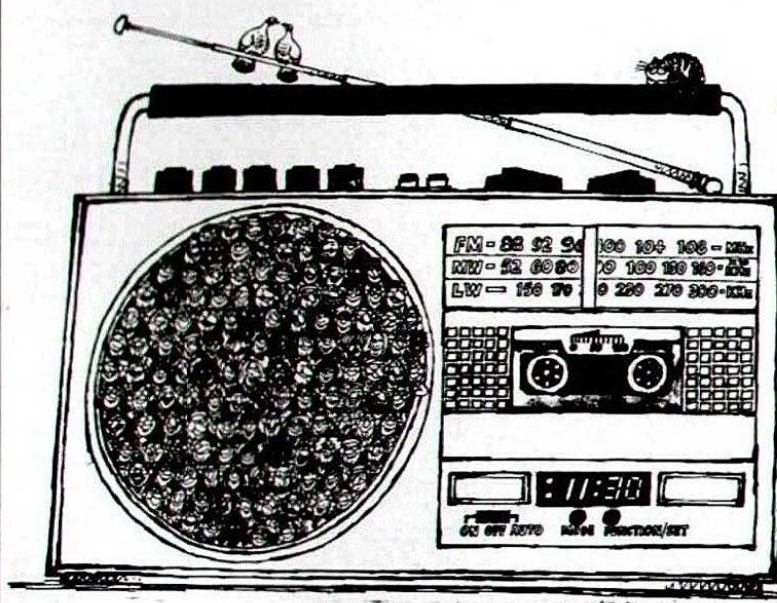
**FEBRUARY**  
 6 Norwich City  
 9/10 L'woods Cup S/F, 1lg  
 13 Liverpool  
 20 Chelsea (FAC5)  
 23/24 L'woods Cup S/F, 2lg  
 27 Coventry City

**MARCH**  
 5 Southampton  
 12 Newcastle United (FAC6)  
 19 West Ham United  
 26 Everton

**APRIL**  
 1 Queens Park Rangers  
 4 Charlton Athletic  
 9 Oxford United (FAC S/F)  
 23 Arsenal  
 24 L'woods Cup Final  
 30 Derby County

**MAY**  
 2 Luton Town  
 14 FA Cup Final  
 To be arranged  
 Newcastle Utd.

## Will you be tuned in to win prizes on "Radio Day"?



Listen to Chiltern Radio to find out more.

Radio Day –  
 Watford v. Luton Town  
 Saturday, December 12th



**"Brain Teasers" answers:** 1. Torquay United. 2. Eagle (Palace)—Owl, Canary and Magpie are First Division. 3. Tim Sherwood. 4. Jackett (worn)—Sterling (one pound)—Porter (obvious). "10 spot"—scorer's fingers, goalie's nose size, fence paling missing, scorer's shorts shading, length of talker's shorts, goalie's shorts colour, picture, back page of paper, comma after "concentration", number 4's right elbow, player in corner, shirt trim.

## WATFORD

Team changes

1. Tony COTON
2. Nigel GIBBS
3. Wilf ROSTRON
4. Kenny JACKETT
5. Mark MORRIS
6. John McCLELLAND
7. Tony AGANA
8. Malcolm ALLEN
9. Trevor SENIOR
10. Gary PORTER
11. Glyn HODGES

Subs: no:   
 no:

## SWINDON TOWN

Team changes

1. Nick HAMMOND
2. Dave HOCKADAY
3. Phil KING
4. Kieran O'REGAN
5. Tim PARKIN
6. Colin CALDERWOOD
7. Dave BAMBER
8. Steve WHITE
9. Jimmy QUINN
10. Steve FOLEY
11. Leigh BARNARD

Subs: no:   
 no:

Half-time: Full-time: Att:

### TODAY'S MATCH OFFICIALS:

Referee: GERALD ASHBY (Worcester)

Linesmen:

R. L. Bigger (Croydon—red trim flag)

J. F. Thompson (Southfleet—yellow trim flag)

Reserve Official: K. Coniam

